

# A Catalogue of the Antiquities in the Chandraketugarh College Museum

Bijan Mondal  
UGC Senior Research Fellow  
Department of Archaeology  
University of Calcutta

# An Introduction

- The concept of the museum has been imitated by the Prof. Naryan Das, Ex-Principal of the college. The museum is enriched the collection of archaeological treasures of the famous historical site of Chandraketugarh. The museum has a significant collection of terracotta figurines, terracotta objects, potsherd, coins and other archaeological objects. The museum collection has been enriched by the donations of several local people. Md. Abdul Hamid a resident and the employee of the college donated his entire collections to the museum. Md.Azibar Rahaman, Guest Lecturer, Department of History of the college also donated to the Museum. Gourishankar De, eminent historian also contribute to the museum. Explorations programme at Chandraketugarh and its surrounding conducted by the department of history of the college also enrich the museum. The present shape of the museum has been possible due to the zeal of Prof. Rupa Chakraborty, Head, Department of History.

# Chandraketugarh at a glance

- **Chandraketugarh (22°41' - 22°43' N; 88°42' - 88°44' E)** in the Berachampa region is under the Deganga P.S. and about 38 kms north-east of Kolkata. The Vidyadhari flows about 10 km away from the site, however, a number of palaeo-channels can be located here. The landscape in and around this site consists of several low and moderately high mounds either structural or non-structural. Most of these mounds are presently occupied by modern habitational areas or villages of Deulia (Debalaya – Khana Mihirer Dhibi, Itakhola and Noongola), Singer Ati, Shanpukur, Hadipur, Jhikra, Ranakhola, Ghorapota, Dhanpota, Chuprijhara, Mathbari, Ghaziatala etc. All these villages have yielded habitational remains. Hadipur yielded NBPW, grey ware and a terracotta female figure holding a lotus-stalk in both hands, possibly representing the goddess Lakshmi (*IAR* 1961-62:62). The site covers an area of about 2/3 sq. miles. This site is partially encircled by a huge wall of mud or a continuous elevated mud tract generally referred to by archaeologists as the 'rampart wall' or 'rampart' and it was on this elevated mud corridor that excavations were conducted.
- From the early years of the 20<sup>th</sup> century, the antiquarian remains from this site were gradually brought to light through the efforts of Tarak Nath Ghosh, A. H. Longhurst, R.D.Banerji, K.N.Dikshit, Kalidas Dutta and others. Excavations were conducted at the site by K.G.Goswami from 1956-57 to 1961-62 and C.R. Roychoudhury from 1962-63 to 1967-68 with the additional supervision by D.P.Ghosh during the field season of 1964-65. Excavations were conducted at five different localities - i) Berachampa, near the Itakhola locality, ii) Khana Mihirer Dhipi a 14 feet high mound northeast of Berachampa, iii) Itakhola paddy field, iv) Noongola, situated between Khana Mihirer Dhipi and Itakhola, and v) Hadipur a village outside the mud fortification area in the southern quarter of Chandraketugarh (*IAR* 1956-57:29-30; 1957-58:51-53; 1958-59:55-56; 1959-60:50-52; 1960-61:39-40; 1961-62:62-63; 1962-63:46-47; 1963-64:63-65; 1964-65:52-53; 1965-66:59-60; 1966-67:48). Again in 2000 a minor excavation at the site was undertaken by Archaeological Survey of India under Bimal Bandopadhyay which came to an abrupt end (*IAR* 2000-01:156-60).

- Excavations at Khana Mihirer Dhipi during 1959-60, unfurled seven cultural phases ranging from the Mauryan to the post-Gupta periods. Period I yielded large sized pots and a few specimens of chalcedony beads, probably assignable to Mauryan times. Period II was represented by NBPW and BRW along with a few beads of semi-precious stones. The notable finds from Period III comprise dishes with round base and externally grooved rim, awl and cosmetic sticks of bone and ivory, beads of carnelian, a bone dice and a steatite casket assignable to the Sunga period. Period IV assignable to the Sunga-Kushana period yielded rouletted ware, cast copper coins etc. Period V assignable to the Gupta period yielded grey and black pottery sometimes with stamped design, terracotta female figurines, beads of glass and semi-precious stones like chalcedony, disc of bone and shell bangles. Period VI yielded pottery lamps, terracotta plaques depicting animals and erotic human figures and other objects similar to those unearthed from the same period in other trenches during earlier excavations. The occupational deposit of Period VII was quite disturbed. This excavation established that the temple had in its core an earlier structure 39 feet square, its four sides and offsets being built of bricks of irregular sizes.
- Chandraketugarh is the only early historic site in West Bengal which yielded an unparalleled terracotta repertoire so far recorded in eastern India. A wide variety of female and male figurines, animals, toy-carts, erotic couples, narrative plaques depicting harvesting scenes, aquatic motifs, lady with bird motifs, etc., the so-called *yaksi* figures with elaborately ornamented voluptuous bodies adorned by heavy girdles and five-fold headdresses or *pancachudas*, besides, complex coiffures, have been documented from this site. Besides terracotta figurines and plaques,
- Chandraketugarh has also yielded a large number of coins including cast copper coins, punch-marked copper and silver coins, one billon coin with ship motif, Kushana gold coins, a few gold coins of the Imperial Guptas, a silver coin of Skandagupta, etc. Among these one billion coin bearing ship motif, one punch marked coin with three human figures on the obverse and a peacock on a hill on the reverse ascribable to Mauryan dynasty, another punch marked coin with fish motif, a gold coin of Chandragupta-Kumaradevi type and archer type of Chandragupta II deserve to be specially mentioned.



- The main text of the catalogue has been conceived in several categories or groups. The groups are as follows:
- Divine and Semi divine
- Mithuna and Maithuna Plaques
- Animal riders
- Plaques with Narrative Content
- Plaques and Figurines of Animals
- Pottery
- Miscellaneous

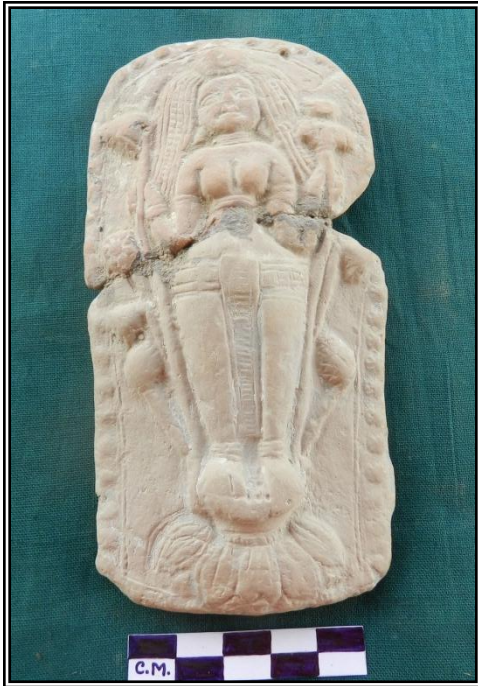
- Divine and Semi divine
- 1. Mother Goddesses
- 2. Laksmi
- 3. The Lady with Weapons as hairpins and Her Variations
- 4. Ganas, Yaksas and Nagas
- 5. Male and Female Figurines with different attributes

## Lady with weapons as hairpins and her Variations

These are the most controversial terracotta figure of ancient India. Generally these divine figure shows with an elaborate bicornate headgear comprising of stylized hairpins in the form of weapons of war. The weapons or *ayudhas* represented on the headdress are *ankush* or a goad, a *trishula* or a trident, a *parasu* or a battle axe, a *vajra* or a thunder stick and a *dhvaja* or a banner. Most of the present data base has five hairpins on the both side. There are six hairpins placed on the both side of the headgear. Sometimes there are pearls attached to the hairpins. The figure has been ornamented with ear ornaments, multiple string ornaments running over the shoulder and down her torso, a heavy many stranded girdle, thick necklaces, decorated armlets, heavy bangle , medallion tied to her narrow waist etc.

The identification of the figure has been a matter of controversy. The figure has been identified as *Sri*, *Maya devata*, *Panchachuda Yakshi* and *sinivali*. Stella Kramrisch (1993) identified this figurine with the apsada Panchachuda produced at the churning of the ocean, while J.N. Banerjea (1956) grouped her along with Yakshis and Johnston (1942) identified her with Goddess maya of Saudarananda kavya and the mother goddess maya refereed to in the Oxyrhynchus Papyrus, No. 1829, where the goddess is invoked for bringinhg flood in the Gnages. The only basis for the identification with the Panchachuda apsara (1939) is the existence of the five emblems on the headdress. G. R. Sharma (1960) identified her with Vedic Goddess *sinivali* who is worshipped in order to place the clay in the hands of Aditi, the great one so that a fair pan may be fashioned.

Laksmi



### **Lakshmi**

Accession Number : 08.01

Photography No: DSCN2980

Provenance: Chandraketurgarh

Technique: Moulded

Size: 15.7x6.7cm

Period: 1<sup>st</sup>-2<sup>nd</sup> centuries CE

The plaque shows a female figure standing on a full blown lotus from which spring six lotus stalks with buds and blooming lotus flowers. The main figure is portrayed as holding a large stalk in each hand. She is decked with ornaments and a long garment. The hair is piled up and numerous plaits flow down. The background is plain and the border of the plaque is decorated with tiny circles. A similar type of figure has been collected from Chandraketurgarh and is now kept in the State Archaeological Museum (sengupta 2007:53).

### **Lakshmi**

Accession Number : 08.85

Photography No: DSCN3750

Provenance: Chandraketurgarh

Technique: Moulded

Size: 6.5x7 cm

Period: 1<sup>st</sup>-2<sup>nd</sup> centuries CE

The broken plaque shows a female figure. The main figure is portrayed as holding a large stalk in each hand. She is decked with ornaments.



# The Lady with Weapons as Hairpins and her Variations



### **Lady with the auspicious hairpins**

Accession Number : 08.24

Photography No: DSCN2642

Provenance: Chandraketugarh

Technique: Moulded

Size: 9.8x8 cm

Period: 1<sup>st</sup>-2<sup>nd</sup> centuries CE

This broken plaque depicts a bejeweled female figure with bicornate headgear and a central rosette. There are ten hair pins placed on either side of the head gear. The divinity is profusely ornamented with large earrings, armlet, thick bangles, heavy necklace. The border is decorated with floral and beaded design.

### **Lady with the auspicious hairpins**

Accession Number : 08.18

Photography No: DSCN2635

Provenance: Chandraketugarh

Technique: Moulded

Size: 5.4x9 cm

Period: 1<sup>st</sup>-2<sup>nd</sup> centuries CE

This is another terracotta figure in high relief with bicornate headgear and a central rosette. There are ten hair pins placed on the either side of the head gear. The border of the plaque is beautifully ornamented.



### **Lady with the auspicious hairpins**

Accession Number : 08.20

Photography No: DSCN2662

Provenance: Chandraketugarh

Technique: Moulded

Size: 7x9.5 cm

Period: 1<sup>st</sup>-2<sup>nd</sup> centuries CE

This is another terracotta figure with bicornate headgear and a central rosette. There are ten hair pins placed on the either side of the head gear. Border is beautifully ornamented. In addition to this at the centre of the stele there is a big flower and a hole for hanging on the wall.





**Lady with the auspicious hairpins**

Accession Number : 08.25

Photography No: DSCN2675

Provenance: Chandraketugarh

Technique: Moulded

Size: 6.3x10 cm

Period: 1<sup>st</sup>-2<sup>nd</sup> centuries CE

This is another terracotta figure in low relief with bicornate headgear and a central rosette, which is missing and made with applique technique. There are ten hair pins placed on the either side of the head gear. Border is beautifully ornamented.



**Lady with the auspicious hairpins**

Accession Number : 08.23

Photography No: DSCN2683

Provenance: Chandraketugarh

Technique: Moulded

Size: 6x8.8 cm

Period: 1<sup>st</sup>-2<sup>nd</sup> centuries CE

This is another terracotta figure in a medium relief with bicornate headgear and a central rosette. There are ten hair pins placed on the either side of the head gear. The border is beautifully ornamented.

**Lady with the auspicious hairpins**

Accession Number : 08.14

Photography No: DSCN2635

Provenance: Chandraketugarh

Technique: Moulded

Size: 7x10 cm

Period: 1<sup>st</sup>-2<sup>nd</sup> centuries CE

Same as above







**Lady with the auspicious hairpins**

Accession Number : 08.19

Photography No: DSCN2635

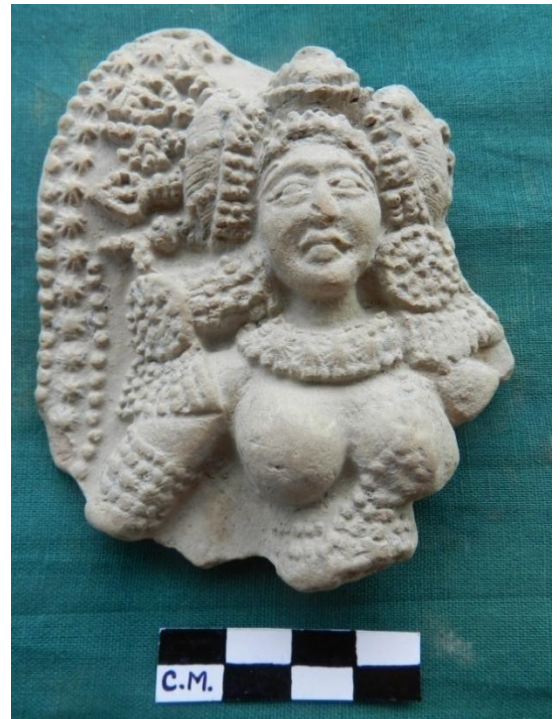
Provenance: Chandraketugarh

Technique: Moulded

Size: 7x10 cm

Period: 1<sup>st</sup>-2<sup>nd</sup> centuries CE

Same as above



**Lady with the auspicious hairpins**

Accession Number : 08.21

Photography No: DSCN2635

Provenance: Chandraketugarh

Technique: Moulded

Size: 7x10 cm

Period: 1<sup>st</sup>-2<sup>nd</sup> centuries CE

Same as above



**Lady with the auspicious hairpins**

Accession Number : 08.16

Photography No: DSCN2635

Provenance: Chandraketugarh

Technique: Moulded

Size: 7x10 cm

Period: 1<sup>st</sup>-2<sup>nd</sup> centuries CE

Same as above

**Lady with the auspicious hairpins**

Accession Number : 08.27

Photography No: DSCN2635

Provenance: Chandraketugarh

Technique: Moulded

Size: 7x10 cm

Period: 1<sup>st</sup>-2<sup>nd</sup> centuries CE

Mutilated fragmentary figure .



**Lady with the auspicious hairpins**

Accession Number : 08.14

Photography No: DSCN2635

Provenance: Chandraketugarh

Technique: Moulded

Size: 7x10 cm

Period: 1<sup>st</sup>-2<sup>nd</sup> centuries CE

Female figure with five hair pins.



**Lady with the auspicious hairpins**

Accession Number : 08.33

Photography No: DSCN3659

Provenance: Chandraketugarh

Technique: Moulded

Size: 10.5x7cm

Period: 1<sup>st</sup>-2<sup>nd</sup> centuries CE

Same as above





**Lady with the auspicious hairpins**

Accession Number : 08.31

Photography No: DSCN2635

Provenance: Chandraketugarh

Technique: Moulded

Size: 10x7.8 cm

Period: 1<sup>st</sup>-2<sup>nd</sup> centuries CE

Same as above

Female figure with five hair pins.

**Lady with the auspicious hairpins**

Accession Number : 08.26

Photography No: DSCN4016

Provenance: Chandraketugarh

Technique: Moulded

Size: 6.3x9 cm

Period: 1<sup>st</sup>-2<sup>nd</sup> centuries CE

Same as above

Female figure with five hair pins.



**Lady with the auspicious hairpins**

Accession Number : 08.22

Photography No: DSCN4053

Provenance: Chandraketugarh

Technique: Moulded

Size: 9x7.5 cm

Period: 1<sup>st</sup>-2<sup>nd</sup> centuries CE

Broken part of a female figure who is elaborately ornamented



**Lady with the auspicious hairpins**

Accession Number : 08.37

Photography No: DSCN4099

Provenance: Chandraketurgh

Technique: Moulded

Size: 6x6.6 cm

Period: 1<sup>st</sup>-2<sup>nd</sup> centuries CE

A female figure with ten palm fronds in place of hair pins.

# Ganas, Yaksas and Nagas

### **A Pot-Bellied Man**

Accession Number : 08.61

Photography No: DSCN3844

Provenance: Chandraketugarh

Technique: Double Moulded

Size: 6x6.5x5.5cm

Period: 1<sup>st</sup>-2<sup>nd</sup> centuries CE

A rattle conceived in the round and produced with the help of two moulds. It represents a pot-bellied male figure with a head gear and banded ornament running across his left shoulder.



### **A Seated Yaksa**

Accession Number : 08.63

Photography No: DSCN3850

Provenance: Chandraketugarh

Technique: Double Moulded

Size: 6x6.5x3cm

Period: 1<sup>st</sup>-2<sup>nd</sup> centuries CE

A bejewelled and naked man is seated on a low chair. The man adorned with ankles and ornamented waist band.



### **A Seated Yaksa**

Accession Number : 06.62

Photography No: DSCN3854

Provenance: Chandraketugarh

Technique: Double Moulded

Size: 7.6x5.6x4.5 cm

Period: 1<sup>st</sup>-2<sup>nd</sup> centuries CE

Same as above.





### **A Yaksa**

Accession Number : 08.37

Photography No: DSCN4099

Provenance: Chandraketurgh

Technique: Moulded

Size: 6x6.6 cm

Period: 1<sup>st</sup>-2<sup>nd</sup> centuries CE

A female figure with ten palm fronds in place of hair pins.

### **A Gana Figure**

Accession Number : 06.110

Photography No: DSCN4227

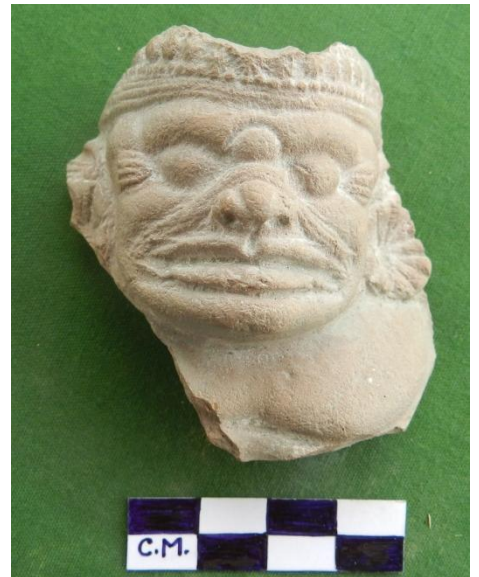
Provenance: Chandraketurgh

Technique: Moulded

Size: 6x6.6 cm

Period: 1<sup>st</sup>-2<sup>nd</sup> centuries CE

This is a broken face of a double moulded face of grotesque Yaksa.



## Male and Female Figurines with different attributes



### **A pair of Feet**

Accession Number : 08.138

Photography No: DSCN 2444

Provenance: Chandraketugarh

Technique: Moulded

Size: 9x7.8 cm

Period: 1<sup>st</sup>-2<sup>nd</sup> centuries CE

This is a fragment of a larger plaque depicting the feet of a figure. The feet are decorated with anklets and the folds of the lower garment worn by the figure are visible. She wears a pair of slippers on her feet. The extant border is decorated with a series of beads.



### **A pair of Feet**

Accession Number : 09.139

Photography No: DSCN 2450

Provenance: Chandraketugarh

Technique: Moulded

Size: 6.8x6.8 cm

Period: 1<sup>st</sup>-2<sup>nd</sup> centuries CE

This is a fragment of a larger plaque depicting the feet of a figure. The feet are decorated with anklets and the folds of the lower garment worn by the figure are visible. She wears a pair of slippers on her feet. The extant border is decorated with a series of beads.



### **Human Feet in Sandals**

Accession Number : 06.140

Photography No: DSCN 2444

Provenance: Chandraketugarh

Technique: Moulded

Size: 12x8 cm

Period: 1<sup>st</sup>-2<sup>nd</sup> centuries CE

This is an high relief figure beautifully decorated. The border is decked with floral and beaded design. The feet is kept on the designed slipper with anklet. The figure wears a long dress hanging upto the ankle.





### **A pair of Feet**

Accession Number : 06.141

Photography No: DSCN 2472

Provenance: Chandraketugarh

Technique: Moulded

Size: 9x7.8 cm

Period: 1<sup>st</sup>-2<sup>nd</sup> centuries CE

This is a fragment of a larger plaque depicting the feet of a figure. The bare feet is depicted with sandals. The extant border is decorated with a series of flowers.

### **A pair of Feet**

Accession Number : 08.142

Photography No: DSCN

Provenance: Chandraketugarh

Technique: Moulded

Size: 5.4x8.5 cm

Period: 1<sup>st</sup>-2<sup>nd</sup> centuries CE

This is a another fragment of a larger plaque depicting a pair of feet with sandals. Heavy anklets are visible on the feet. The extant border is decorated with a series of flowers.



### **A pair of Feet**

Accession Number : 08.143

Photography No: DSCN

Provenance: Chandraketugarh

Technique: Moulded

Size: 9x9 cm

Period: 1<sup>st</sup>-2<sup>nd</sup> centuries CE

This terracotta plaque grey in colour shows a pair of bare human feet. The feet are decorated with anklets and other ornaments. The figure wears a garment whose folds are apparent. A rosette / big flower is present in between the two feet. The extant border is decorated with three separate series of flowers.







### **Three Standing Female Figures**

Accession Number : 08.131

Photography No: DSCN2498

Provenance: Chandraketugarh

Technique: Moulded

Size: 6.2x5.8 cm

Period: 1<sup>st</sup>-2<sup>nd</sup> centuries CE

The present terracotta plaque shows three standing female figures in low relief. The central figure is naked. Both the hands are rested on the waist. She wears bangles and anklets and ear rings with bangles are rested on the waist. The hair is beautifully arranged on the head. The attendant figures on both the sides wears lower garments and holds mirrors in one hand. They wear the same ornaments as the main figure. The border of the plaque is beautifully decorated with flowers on the left and right side and the top and bottom parts show unidentified objects.

### **Fragmentary terracotta plaque depicting a hand of a figure**

Accession Number : 08.144

Photography No: DSCN 2502

Provenance: Chandraketugarh

Technique: Moulded

Size: 10.2x10 cm

Period: 1<sup>st</sup>-2<sup>nd</sup> centuries CE

The fragmented plaque shows a beautiful decoration or ornaments floral designs along with an ornamented hand of a figure.



### **Lower part of a female figure from the waist downwards**

Accession Number : 08.146

Photography No: DSCN 2513

Provenance: Chandraketugarh

Technique: Moulded

Size: 7x9 cm

Period: 1<sup>st</sup>-2<sup>nd</sup> centuries CE

This is a fragmentary figure of a female figure from the waist to the knees covered with folded garment and waist band. The edge of the garment has beaded designs.

### **A pair of Feet**

Accession Number : 06.136  
Photography No: DSCN 2525  
Provenance: Chandraketugarh  
Technique: Moulded  
Size: 9.7x8.5 cm  
Period: 1<sup>st</sup>-2<sup>nd</sup> centuries CE

This is a bare footed and broken figure depicted with beautiful cloth and huge anklet on both the legs.



### **An Attendant Figure**

Accession Number : 08.145  
Photography No: DSCN 2529  
Provenance: Chandraketugarh  
Technique: Moulded  
Size: 6.7x4.4 cm  
Period: 1<sup>st</sup>-2<sup>nd</sup> centuries CE

A fragmentary and abraded piece of terracotta plaque probably depicting an attendant figure. She holds a chowri on her right hand which rests on her right shoulder and the left hand is shown with three bangles resting on the left hip. She wears ear rings and head dresses. The other part of the figure is broken and the details of the plaque are missing due to rolled out conditions.

### **A Pair of Feet**

Accession Number : 08.137  
Photography No: DSCN 2538  
Provenance: Chandraketugarh  
Technique: Moulded  
Size: 9.5x9.6 cm  
Period: 1<sup>st</sup>-2<sup>nd</sup> centuries CE

This is a high relief broken piece of a human figure of a pair of legs in a well decorated sandals. The extant border is beautifully decorated with three lines of flowers and beads.







### **A Decorated Foot**

Accession Number : 06.147

Photography No: DSCN 2547

Provenance: Chandraketugarh

Technique: Moulded

Size: 6.4 x 6.5 cm

Period: 1<sup>st</sup>-2<sup>nd</sup> centuries CE

The broken plaque represents a foot wearing a sandal decorated with floral motif.

### **A Pair of Feet**

Accession Number : 00.148

Photography No: DSCN2553

Provenance: Chandraketugarh

Technique: Moulded

Size: 7.6x5 cm

Period: 1<sup>st</sup>-2<sup>nd</sup> centuries CE

This fragmentary plaque shows a pair of bare feet. The background is decorated with flowers interspersed throughout the background..



### **A Fragmentary Plaque**

Accession Number : 06.150

Photography No: DSCN 2547

Provenance: Chandraketugarh

Technique: Moulded

Size: 8.5x5.8 cm

Period: 1<sup>st</sup>-2<sup>nd</sup> centuries CE

A fragmentary plaque showing a hand in abhaya mudra. The figure is covered with decorated garments.



### **A Human Head**

Accession Number : 08.149

Photography No: DSCN2569

Provenance: Chandraketugarh

Technique: Moulded

Size: 2.8x3 cm

Period: 1<sup>st</sup>-2<sup>nd</sup> centuries CE

A fragmentary piece of terracotta figure shows a human head with beautiful floral decorations on the back. The presence of hole on the top indicates that the plaque was meant for hanging on the wall.

### **A Human Head**

Accession Number : 09.158

Photography No: DSCN2573

Provenance: Chandraketugarh

Technique: Moulded

Size: 8.5x12.5x11.5 cm

Period: 1<sup>st</sup>-2<sup>nd</sup> centuries CE

This is an unidentified figure of a broken head with turban and large protruding eyes



### **A Broken Figure (A Rider?)**

Accession Number : 09.157

Photography No: DSCN2591

Provenance: Chandraketugarh

Technique: Moulded

Size: 9x6 cm

Period: 1<sup>st</sup>-2<sup>nd</sup> centuries CE

A broken figure (a rider?) holds a whip in his left hand and both the hands wear a number of bangles. A rounded and decorated halo is present on the back of the head. Hair is beautifully arranged.



### **Broken Torso**

Accession Number :06.155

Photography No: DSCN2594

Provenance: Chandraketugarh

Technique: hand-modelled

Size: 11x4.5 cm

Period: 1<sup>st</sup>-2<sup>nd</sup> centuries CE

This is a broken and three dimensional hand-modelled terracotta figure. The hands and the legs are missing, while the head dress and ear ring are decorated with appliqué technique.



### **A Head**

Accession Number :NA

Photography No: DSCN2599

Provenance: Chandraketugarh

Technique: Double Moulded

Size: 3.7x3.4 cm

Period: 1<sup>st</sup>-2<sup>nd</sup> centuries CE

This is a broken terracotta head of a human figure.

### **Skeletal Body**

Accession Number :08.156

Photography No: DSCN2605

Provenance: Chandraketugarh

Technique: Double Moulded

Size: 6x3.5 cm

Period: 1<sup>st</sup>-2<sup>nd</sup> centuries CE

This is an interesting male figure with a skeletal body and bearded face. The hands and lower abdomen are missing.





### **Double moulded male figure**

Accession Number : 09.154

Photography No: DSCN2610

Provenance: Chandraketugarh

Technique: Double Moulded

Size: 9x7x4.5 cm

Period: 1<sup>st</sup>-2<sup>nd</sup> centuries CE

This is a double moulded male figure. The lower part is missing. The right hand of the figure shows abhaya mudra. The face is abraded and the eyes are made with pinching technique.

### **Male standing figure**

Accession Number : 07.08

Photography No: DSCN2755

Provenance: Chandraketugarh

Technique: Moulded

Size: 9.3x6.6 cm

Period: 1<sup>st</sup>-2<sup>nd</sup> centuries CE

This is a broken male standing figure depicting the waist part with beautiful decorations of garments and ornaments.



### **Mother and child figure**

Accession Number : 08.151

Photography No: DSCN2635

Provenance: Chandraketugarh

Technique: Double Moulded

Size: 8x6x4.5 cm

Period: 1<sup>st</sup>-2<sup>nd</sup> centuries CE

This is probably a mother and child figure where the main figure i.e. mother is completely broken. The child is on the lap of the female figure.



Accession Number : 08.43

Photography No: DSCN2767

Provenance: Chandraketugarh

Technique: Moulded

Size: 6.3x4.8cm

Period: 1<sup>st</sup>-2<sup>nd</sup> centuries CE

The terracotta plaque shows two naked standing female figures.



Accession Number : 08.08

Photography No: DSCN2771

Provenance: Chandraketugarh

Technique: Moulded

Size: 7x7 cm

Period: 1<sup>st</sup>-2<sup>nd</sup> centuries CE

The terracotta plaque shows a female figure with a transparent sari and waist ornaments. She holds a child on her lap.

Accession Number : 08.12

Photography No: DSCN2780

Provenance: Chandraketugarh

Technique: Moulded

Size: 8x6cm

Period: 1<sup>st</sup>-2<sup>nd</sup> centuries CE

This is another terracotta female figure with decorations and ornamentations. The figure shows movement.





### **A standing male figure**

Accession Number : 08.05

Photography No: DSCN2780

Provenance: Chandraketugarh

Technique: Moulded

Size: 6.5x5.5cm

Period: 1<sup>st</sup>-2<sup>nd</sup> centuries CE

The broken standing male naked figure holds an object on his right hand. The bordered is decorated with flower design.

### **A pair of Feet**

Accession Number : 08.29

Photography No: DSCN2785

Provenance: Chandraketugarh

Technique: Moulded

Size: 8x6cm

Period: 1<sup>st</sup>-2<sup>nd</sup> centuries CE

A decorated pair of feet.



### **A standing female figure**

Lower part of a standing female figure

Accession Number : 08.11

Photography No: DSCN2790

Provenance: Chandraketugarh

Technique: Moulded

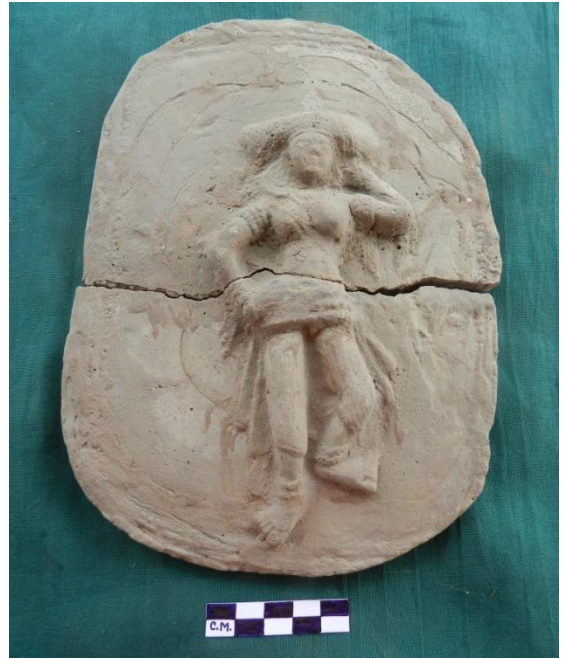
Size: 13x9.5cm

Period: 1<sup>st</sup>-2<sup>nd</sup> centuries CE

A standing female figure with transparent garments.



Accession Number : 06.92  
Photography No: DSCN2955  
Provenance: Chandraketugarh  
Technique: double Moulded  
Size: 23x16cm  
Period: 1<sup>st</sup>-2<sup>nd</sup> centuries CE



Accession Number : 06.93  
Photography No: DSCN2958  
Provenance: Chandraketugarh  
Technique: double Moulded  
Size: 13x9.5cm  
Period: 1<sup>st</sup>-2<sup>nd</sup> centuries CE



Accession Number : 06.91  
Photography No: DSCN2971  
Provenance: Chandraketugarh  
Technique: double Moulded  
Size: 27x15.5cm  
Period: 1<sup>st</sup>-2<sup>nd</sup> centuries CE





### Upper part of a terracotta plaque

Accession Number : 06.113

Photography No: DSCN4203

Provenance: Chandraketugarh

Technique: Moulded

Size: 7x5.7 cm

Period: 1<sup>st</sup>-2<sup>nd</sup> centuries CE

This is a upper part of male terracotta plaque.

### A standing female figure

A standing female figure

Accession Number : 08.53

Photography No: DSCN2790

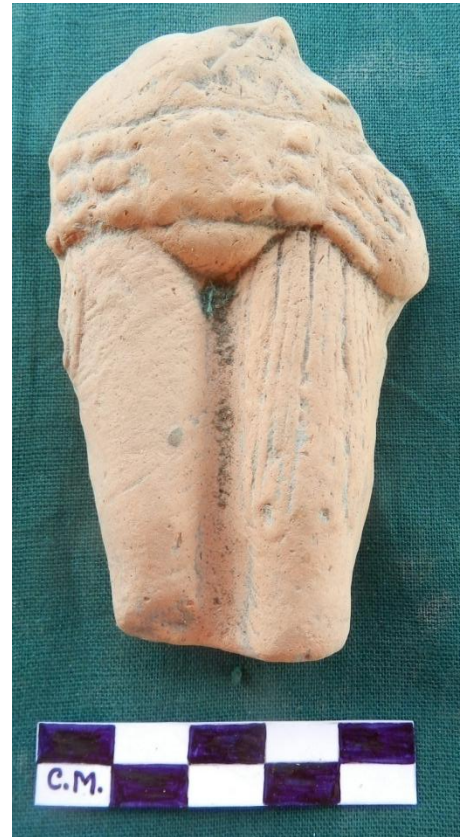
Provenance: Chandraketugarh

Technique: Moulded

Size: 8.2x5cm

Period: 1<sup>st</sup>-2<sup>nd</sup> centuries CE

A standing female figure with waist band and transparent lower garment.



### A standing female figure

Figure with lady attendant

Accession Number : 08.06

Photography No: DSCN2990

Provenance: Chandraketugarh

Technique: Moulded

Size: 6.7x8cm

Period: 1<sup>st</sup>-2<sup>nd</sup> centuries CE

This fragment of a plaque represents a female attendant figure holding an ornate mirror for the principal figure.



### **A standing female figure**

Accession Number : 08.11

Photography No: DSCN2995

Provenance: Chandraketugarh

Technique: Moulded

Size: 7.8x6cm

Period: 1<sup>st</sup>-2<sup>nd</sup> centuries CE

Lower part of a standing female figure with transparent garments.



### **Fragmentary Plaque**

Accession Number : 08.02

Photography No: DSCN3000

Provenance: Chandraketugarh

Technique: Moulded

Size: 13.3x6cm

Period: 1<sup>st</sup>-2<sup>nd</sup> centuries CE

This is a unique specimen of the entire collection. It is a fragmentary plaque depicting most probably an attendant deity. Its head dress is noteworthy besides the floral motifs covering her breasts are quite unique.



### **Terracotta Head**

Accession Number : 08.35

Photography No: DSCN3006

Provenance: Chandraketugarh

Technique: double Moulded

Size: 9x5.8cm

Period: 1<sup>st</sup>-2<sup>nd</sup> centuries CE

The broken plaque depicts the head and head ornaments of a female figure. A few hairpins are visible in the head gear.



### **Male Torso**

Accession Number : 08.54

Photography No: DSCN3013

Provenance: Chandraketurarh

Technique: Moulded

Size: 7.8x10.4cm

Period: 1<sup>st</sup>-2<sup>nd</sup> centuries CE

A male torso depicting a ornamented right hand holding an ornamented accessory.

### **Female Figure**

Accession Number : 08.55

Photography No: DSCN3018

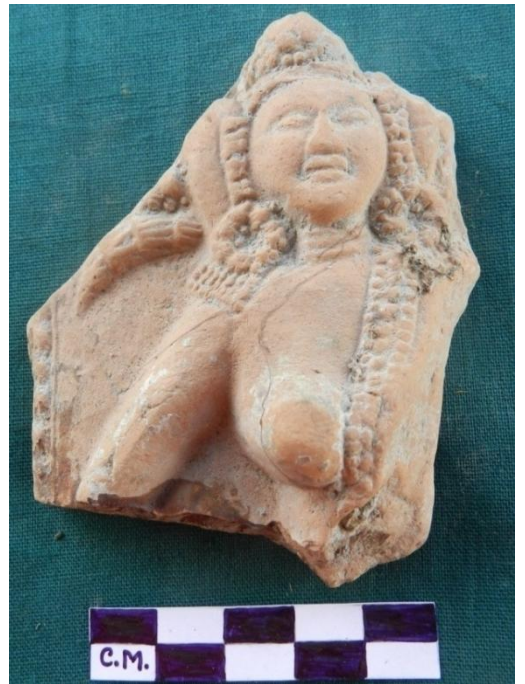
Provenance: Chandraketurarh

Technique: Moulded

Size: 8x6.8cm

Period: 1<sup>st</sup>-2<sup>nd</sup> centuries CE

A broken female figure with headgear and ornament.



### **Female Figure**

Accession Number : 08.42

Photography No: DSCN2790

Provenance: Chandraketurarh

Technique: Moulded

Size: 4.8x4.2cm

Period: 1<sup>st</sup>-2<sup>nd</sup> centuries CE

This is a ornamented head of a terracotta figure.



### **Terracotta Winged Head**

Accession Number : 08.43

Photography No: DSCN2790

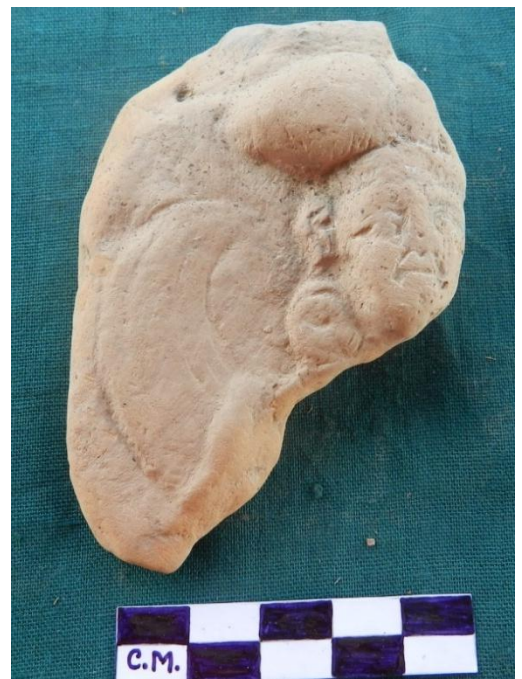
Provenance: Chandraketugarh

Technique: double Moulded

Size: 8.4x5.5cm

Period: 1<sup>st</sup>-2<sup>nd</sup> centuries CE

A fragmentary plaque showing a female head with a peculiar bun-shaped object on top of her head.



### **Terracotta Standing Figure**

Accession Number : 08.33

Photography No: DSCN3654

Provenance: Chandraketugarh

Technique: Moulded

Size: 10.5x5 cm

Period: 1<sup>st</sup>-2<sup>nd</sup> centuries CE

A lower part of a standing female figure with garment and ornaments.



### **Female Figure**

Accession Number : 08.34

Photography No: DSCN3662

Provenance: Chandraketugarh

Technique: Moulded

Size: 9.6x7.2cm

Period: 1<sup>st</sup>-2<sup>nd</sup> centuries CE

A standing female figure with prominent waist girdle.





### **Terracotta Winged Figure**

Accession Number : 08.49

Photography No: DSCN3668

Provenance: Chandraketugarh

Technique: Moulded

Size: 10.5x6cm

Period: 1<sup>st</sup>-2<sup>nd</sup> centuries CE

A standing male figure wearing a dhoti like garment.

### **Standing Figure**

Accession Number : 08.50

Photography No: DSCN3670

Provenance: Chandraketugarh

Technique: Moulded

Size: 6x7cm

Period: 1<sup>st</sup>-2<sup>nd</sup> centuries CE

Middle portion of a standing broken figure.



### **Female Figure**

Accession Number : 08.04

Photography No: DSCN3673

Provenance: Chandraketugarh

Technique: Moulded

Size: 7x5 cm

Period: 1<sup>st</sup>-2<sup>nd</sup> centuries CE

Upper part of a standing female figure.



### **Female Figure**

Accession Number : 08.51

Photography No: DSCN3681

Provenance: Chandraketugarh

Technique: double Moulded

Size: 10.8x7.5cm

Period: 1<sup>st</sup>-2<sup>nd</sup> centuries CE

Upper part of a female figure.



### **A pair of Feet**

Accession Number : 08.47

Photography No: DSCN3684

Provenance: Chandraketugarh

Technique: Moulded

Size: 10x7.8cm

Period: 1<sup>st</sup>-2<sup>nd</sup> centuries CE

A pair of feet with anklets



### **Foot**

Accession Number : 08.45

Photography No: DSCN3696

Provenance: Chandraketugarh

Technique: Moulded

Size: 10.2x6 cm

Period: 1<sup>st</sup>-2<sup>nd</sup> centuries CE

A broken foot



### **Female Figure**

Accession Number : 08.48

Photography No: DSCN3701

Provenance: Chandraketugarh

Technique: Moulded

Size: 8.8x8 cm

Period: 1<sup>st</sup>-2<sup>nd</sup> centuries CE

Upper part of a female figure with ornaments

### **Standing Figure**

Accession Number : 08.46

Photography No: DSCN3706

Provenance: Chandraketugarh

Technique: Moulded

Size: 10.5x5.2 cm

Period: 1<sup>st</sup>-2<sup>nd</sup> centuries CE

Lower part of a standing figure.



### **Ornamented Female Figure**

Accession Number : 08.30

Photography No: DSCN3710

Provenance: Chandraketugarh

Technique: Moulded

Size: 9x7.3 cm

Period: 1<sup>st</sup>-2<sup>nd</sup> centuries CE

Middle portion of an ornamented female figure.



## Decorated Female Figure

Accession Number : 08.32

Photography No: DSCN3719

Provenance: Chandraketugarh

Technique: Moulded

Size: 9.8x6cm

Period: 1<sup>st</sup>-2<sup>nd</sup> centuries CE

This is a highly decorated female figure



## Decorated Female Figure

Accession Number : 08.38

Photography No: DSCN3722

Provenance: Chandraketugarh

Technique: Moulded

Size: 9x7.6cm

Period: 1<sup>st</sup>-2<sup>nd</sup> centuries CE

Middle part of a female figure.



## Female Head

Accession Number : 08.41

Photography No: DSCN3728

Provenance: Chandraketugarh

Technique: Moulded

Size: 6.5x7 cm

Period: 1<sup>st</sup>-2<sup>nd</sup> centuries CE

A female head with an elaborate coiffure.



### **Decorated Female Figure**

Accession Number : 08.44

Photography No: DSCN3732

Provenance: Chandraketugarh

Technique: Moulded

Size: 10x7.8cm

Period: 1<sup>st</sup>-2<sup>nd</sup> centuries CE

This is a female standing figure with decorations.

### **Female Figure**

Accession Number : 08.39

Photography No: DSCN3735

Provenance: Chandraketugarh

Technique: Moulded

Size: 7.5x5.5cm

Period: 1<sup>st</sup>-2<sup>nd</sup> centuries CE

Upper part of abraded female figure.



### **Standing Female Figure**

Accession Number : 08.112

Photography No: DSCN4266

Provenance: Chandraketugarh

Technique: Moulded

Size: 6.3x5 cm

Period: 1<sup>st</sup>-2<sup>nd</sup> centuries CE

This is a middle part of a female figure.





## **Terracotta Winged Figure**

Accession Number : 08.110

Photography No: DSCN4277

Provenance: Chandraketugarh

Technique: Moulded

Size: 7x5.8 cm

Period: 1<sup>st</sup>-2<sup>nd</sup> centuries CE

This is a broken head of a terracotta plaque.

## **Standing Female Figure**

Accession Number : 08.17

Photography No: DSCN4021

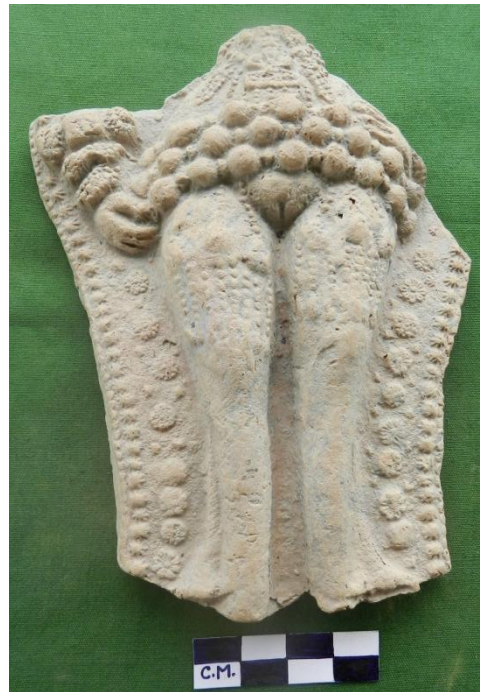
Provenance: Chandraketugarh

Technique: Moulded

Size: 12.5x10 cm

Period: 1<sup>st</sup>-2<sup>nd</sup> centuries CE

Stylized standing female with beaded waist band.



## **Female Figure**

Accession Number : 08.28

Photography No: DSCN4077

Provenance: Chandraketugarh

Technique: Moulded

Size: 9.5x8 cm

Period: 1<sup>st</sup>-2<sup>nd</sup> centuries CE

Stylized standing female with beaded waist band and ornaments.



## Female Figure

Accession Number : 08.03

Photography No: DSCN4083

Provenance: Chandraketugarh

Technique: Moulded

Size: 12x11.5 cm

Period: 1<sup>st</sup>-2<sup>nd</sup> centuries CE

This is a female figure with decorated hair style and ornaments



## Lady hold mirror

Accession Number : 08.09

Photography No: DSCN4106

Provenance: Chandraketugarh

Technique: Moulded

Size: 6.5x4.5 cm

Period: 1<sup>st</sup>-2<sup>nd</sup> centuries CE

This is an attendant figure holds a decorated mirror.



## Lady hold mirror

Accession Number : 08.10

Photography No: DSCN3740

Provenance: Chandraketugarh

Technique: Moulded

Size: 7x3.8 cm

Period: 1<sup>st</sup>-2<sup>nd</sup> centuries CE

This is an attendant figure holds a decorated mirror.



### **A standing female figure**

Accession Number : 08.04

Photography No: DSCN3740

Provenance: Chandraketugarh

Technique: Moulded

Size: 5.5x4.5 cm

Period: 1<sup>st</sup>-2<sup>nd</sup> centuries CE

Female figure holds unidentified objects

### **Terracotta Winged figure**

Accession Number : 08.40

Photography No: DSCN3740

Provenance: Chandraketugarh

Technique: Moulded

Size: 7.5x9 cm

Period: 1<sup>st</sup>-2<sup>nd</sup> centuries CE

Female figure with turban.



### **Female figure**

Accession Number : 09.100

Photography No: DSCN4174

Provenance: Chandraketugarh

Technique: Moulded

Size: 5.5x4.5 cm

Period: 1<sup>st</sup>-2<sup>nd</sup> centuries CE

This is a standing female figure.

# Mithuna and Maithuna Plaques



# Mithuna Plaque

According to V.S. Agarwala mithuna plaques fall into two types the first one is Mithuna or man and women figure and dampati or husband and wife. According to some scholar these plaque were secular in nature and represented the ethos life of the urban society. On the other hand scholars opined that they had religious significance and emerging as sacred symbols. There are some erotic figures in this collection.

## Erotic Figure

Accession Number : 09.68

Photography No: DSCN3824

Provenance: Chandraketugarh

Technique: Moulded

Size: 6.3x5.8 cm

Period: 1<sup>st</sup>-2<sup>nd</sup> centuries CE

This is the portrayal of an erotic couple surrounded by attendants. In this depiction an attempt has been made to express the human figures in realistic manner.



## Erotic Figure

Accession Number : 08.04

Photography No: DSCN3740

Provenance: Chandraketugarh

Technique: Moulded

Size: 5.5x4.5 cm

Period: 1<sup>st</sup>-2<sup>nd</sup> centuries CE

This is a rectangular terracotta plaque with beaded border depicting naked female figure. She is engaged with her private organ.

### **Erotic Figure**

Accession Number : 08.80

Photography No: DSCN3740

Provenance: Chandraketugarh

Technique: Moulded

Size: 6.6x3.8 cm

Period: 1<sup>st</sup>-2<sup>nd</sup> centuries CE

This is the illustration of a small square plaque depicting an erotic couple, where the female figure has been represented lying on a couch. The male figure is missing. A spouted pitcher is seen below the bed.



### **Erotic Figure**

Accession Number : NA

Photography No: DSCN3758

Provenance: Chandraketugarh

Technique: double Moulded

Size: 5x4.2 cm

Period: 1<sup>st</sup>-2<sup>nd</sup> centuries CE

This is a small plaque depicting an erotic couple. The plaque depicts female figure on all fours and male figure engaging her from behind.



Accession Number : 08.81

Photography No: DSCN3763

Provenance: Chandraketugarh

Technique: Moulded

Size: 7.5x6 cm

Period: 1<sup>st</sup>-2<sup>nd</sup> centuries CE

This is another erotic plaque showing a woman reclines on floor with both legs raised apart. The man effects the union. Another figure holds the woman from back.





Accession Number : 08.72

Photography No: DSCN3777

Provenance: Chandraketugarh

Technique: Moulded

Size: 5.7x4.9 cm

Period: 1<sup>st</sup>-2<sup>nd</sup> centuries CE

A rectangular plaque shows a female figure on all fours and male figure engaging her from behind.



Accession Number : 08.83

Photography No: DSCN3740

Provenance: Chandraketugarh

Technique: Moulded

Size: dia 3.1cm

Period: 1<sup>st</sup>-2<sup>nd</sup> centuries CE

This is another circular plaque shows a female figure on all fours and male figure engaging her from behind.



Accession Number : 06.74

Photography No: DSCN3786

Provenance: Chandraketugarh

Technique: Moulded

Size: 6.1x4.8 cm

Period: 1<sup>st</sup>-2<sup>nd</sup> centuries CE

This depicts an erotic couple. The lady on a bed. The male figure is broken.





Accession Number : 08.77

Photography No: DSCN3791

Provenance: Chandraketugarh

Technique: Moulded

Size: 5.3x4 cm

Period: 1<sup>st</sup>-2<sup>nd</sup> centuries CE

The plaque shows a male standing in front of a female figure. The lady is engaged with male organ in her mouth.

Accession Number : 06.75

Photography No: DSCN3796

Provenance: Chandraketugarh

Technique: Moulded

Size: 5.5x4.5 cm

Period: 1<sup>st</sup>-2<sup>nd</sup> centuries CE

This is an abraded circular plaque depicting in erotic mode.



Accession Number : 08.82

Photography No: DSCN3798

Provenance: Chandraketugarh

Technique: Moulded

Size: 5.2x4.6 cm

Period: 1<sup>st</sup>-2<sup>nd</sup> centuries CE

This is a highly abraded erotic figure.



Accession Number : 08.76  
Photography No: DSCN3806  
Provenance: Chandraketugarh  
Technique: Moulded

Size: 5.6x6.6 cm

Period: 1<sup>st</sup>-2<sup>nd</sup> centuries CE

A woman reclines on the bed and both leg raised wide apart. The man stands and effects the union.



Accession Number : 06.78  
Photography No: DSCN3809  
Provenance: Chandraketugarh  
Technique: Moulded  
Size: 6.4x5.7 cm  
Period: 1<sup>st</sup>-2<sup>nd</sup> centuries CE

This is a broken and richly ornamented erotic figure.



# Animal Riders



### **Horse Rider**

Accession Number : 08.125

Photography No: DSCN4285

Provenance: Chandraketugarh

Technique: Moulded

Size: 5.2x5.4cm

Period: 1<sup>st</sup>-2<sup>nd</sup> centuries CE

The beautiful plaque shows a man riding a well decorated horse. The rider is in whipping attitude.

### **Monkeys with crocodile**

Accession Number : 06.123

Photography No: DSCN4223

Provenance: Chandraketugarh

Technique: Moulded

Size: 7.5x6cm

Period: 1<sup>st</sup>-2<sup>nd</sup> centuries CE

This is a beautiful plaque depicting two monkeys. One of them is riding on a crocodile and the other one is on the tree. The crocodile bites the tail of the latter monkey.



### **A Man Riding An Animal**

Accession Number : 09.152

Photography No: DSCN2612

Provenance: Chandraketugarh

Technique: Hand Modelled

Size: 10.2x5.5x4.8 cm

Period: 1<sup>st</sup>-2<sup>nd</sup> centuries CE

The extant figure shows a male riding a ram. Incised decorations are visible through out the body of the animal and the rider.

## The Monkey and the Crocodile

Accession Number : 09.122

Photography No: DSCN 4168

Provenance: Chandraketugarh

Technique: Moulded

Size: 6.8x5.8 cm

Period: 1<sup>st</sup>-2<sup>nd</sup> centuries CE

The plaque probably depicts the popular *Vanara Jataka*. This *Jataka* has been frequently represented in the terracotta art of Chandraketugarh and other early historical sites.





# Plaques and Figurines of Animals



## Two Elephants

Accession Number : 06.126

Photography No: DSCN 2421

Provenance: Chandraketugarh

Technique: Moulded

Size: 6x4.3cm

Period: 1<sup>st</sup>-3<sup>rd</sup> centuries CE

The oval shaped plaque shows two elephants either in a combative posture or in a playful stance with their trunks entwined. One of the elephants is tuskers. The artist displays his proficiency in depicting animals in a realistic manner through plaques such as present specimen.

## An Elephant

Accession Number : 06.133

Photography No: DSCN 2520

Provenance: Chandraketugarh

Technique: Moulded

Size: 5x4.3 cm

Period: 1<sup>st</sup>-2<sup>nd</sup> centuries CE

This is a fragmentary and highly abraded piece of an elephant.



## An Elephant

Accession Number : 06.133

Photography No: IMG\_0138

Provenance: Chandraketugarh

Technique: Moulded

Size: 5x4.3 cm

Period: 1<sup>st</sup>-2<sup>nd</sup> centuries CE

This is a fragmentary and highly abraded piece of an elephant





### **An Elephant**

Accession Number : 06.133

Photography No: IMG\_0133

Provenance: Chandraketurah

Technique: Moulded

Size: 5x4.3 cm

Period: 1<sup>st</sup>-2<sup>nd</sup> centuries CE

This is a fragmentary and highly abraded piece of an elephant.

### **An Elephant**

Accession Number : 06.132

Photography No: DSCN

Provenance: Chandraketurah

Technique: Moulded

Size: 5x4.3 cm

Period: 1<sup>st</sup>-2<sup>nd</sup> centuries CE

This broken plaque depicts an elephant walking to its left. The head is broken. The existing border has decorations.



### **An Elephant**

Accession Number : 06.133

Photography No: IMG\_0123

Provenance: Chandraketurah

Technique: Moulded

Size: 5x4.3 cm

Period: 1<sup>st</sup>-2<sup>nd</sup> centuries CE

This is a fragmentary and highly rolled out piece of an elephant





### **A Horse**

Accession Number 09.134

Photography No: DSCN2569

Provenance: Chandraketugarh

Technique: Moulded

Size: 5.9x4.4 cm

Period: 1<sup>st</sup>-2<sup>nd</sup> centuries CE

A broken plaque depicts a stylized horse with prominent hair on its shoulder. The border is decorated with flowers and the background is filled with flowers

### **A Horse**

Accession Number :06.135

Photography No: DSCN2469

Provenance: Chandraketugarh

Technique: Moulded

Size: 4.8x4.5 cm

Period: 1<sup>st</sup>-2<sup>nd</sup> centuries CE

This is another broken plaque depicting a figure of horse in running position.



### **A Peahen**

Accession Number : 08.116

Photography No: DSCN4182

Provenance: Chandraketugarh

Technique: Moulded

Size: 5.5x6.3 cm

Period: 1<sup>st</sup>-2<sup>nd</sup> centuries CE

This is a broken piece of terracotta depicting a peahen and her child.

## **An Elephant and a Crocodile**

Accession Number : 06.119

Photography No: DSCN4213

Provenance: Chandraketugarh

Technique: Moulded

Size: 5.5x6cm

Period: 1<sup>st</sup>-2<sup>nd</sup> centuries CE

This specimen shows an elephant slaying a crocodile with his trunk. The body of the elephant is decorated with stamped design.



## **Two Monkeys**

Accession Number : 06.128

Photography No: DSCN 2462

Provenance: Chandraketugarh

Technique: Moulded

Size: 6.5x7 cm

Period: 1<sup>st</sup>-2<sup>nd</sup> centuries CE

The plaque depicts two seated monkeys facing each other and holding an object.

## **Two Monkeys**

Accession Number :09.129

Photography No: DSCN 2475

Provenance: Chandraketugarh

Technique: Moulded

Size: 6.5x7 cm

Period: 1<sup>st</sup>-2<sup>nd</sup> centuries CE

This clay tablet depicts two seated monkeys holding two pots. The monkey in the right side holds the pot in such a manner as if pouring its contents into the pot held by the monkey to the left.







### **A Coconut Tree**

Accession Number : 09.117

Photography No: DSCN 4134

Provenance: Chandraketugarh

Technique: Moulded

Size: 5.7x5 cm

Period: 1<sup>st</sup>-2<sup>nd</sup> centuries CE

The fragmentary plaque shows a tusk of an elephant charging a coconut tree. The background is decorated with flowers.

### **An Elephant**

Accession Number : 06.132

Photography No: DSCN

Provenance: Chandraketugarh

Technique: Moulded

Size: 5x4.03 cm

Period: 1<sup>st</sup>-2<sup>nd</sup> centuries CE

This broken plaque depicts an elephant walking to its left. The head is broken. The existing border has decorations.



### **Mythical Animal**

Accession Number : 06.133

Photography No: IMG\_0115

Provenance: Chandraketugarh

Technique: Moulded

Size: 5x4.3 cm

Period: 1<sup>st</sup>-2<sup>nd</sup> centuries CE

This is an unidentified figure of a mythical animal bearing the body of a horse and the claws of a bird.



## **A Monkey**

Accession Number : 08.65

Photography No: DSCN 4199

Provenance: Chandraketugarh

Technique: Moulded

Size: 5.3x4.8 cm

Period: 1<sup>st</sup>-2<sup>nd</sup> centuries CE

A seated monkey holds an object on his right hand and this object rests on his shoulder.



## Animal Figure

The museum has innumerable terracotta animal figurines both in form of plaques and in the round. There are some specimens which are hand made. Some of the figures have red, grey and black slip. The animal figurines include those of elephant, ram, horse, bird, crocodile, monkey, animal figures with riders, and others. Most of the plaques were meant for home decorations and were also probably used as toys.

### An Elephant

Accession Number :08.165able

Photography No: DSCN

Provenance: Chandraketugarh

Technique: Double Moulded

Size: 10.5x11x5 cm

Period: 1<sup>st</sup>-2<sup>nd</sup> centuries CE

This is a terracotta elephant in the round made with double moulding technique. The tusk and the trunks are depicted inwards so as to reach the mouth of the animal. The opposite side is broken. The eyes are carved in pinching technique.



### An Elephant

Accession Number : 09.166

Photography No: DSCN4223

Provenance: Chandraketugarh

Technique: Double Moulded

Size: 10.5x12x5.6cm

Period: 1<sup>st</sup>-2<sup>nd</sup> centuries CE

This is a three dimensional figure of a broken elephant.



### **An Elephant**

Accession Number : 09.89

Photography No: DSCN 2854

Provenance: Chandraketugarh

Technique: Hand Modelled

Size: 12x10x5 cm

Period: 1<sup>st</sup>-2<sup>nd</sup> centuries CE

This is another variety of toy cart. The present specimen represents an elephant head adorned with decorations of garland, tusk and teeth.

### **An Elephant**

Accession Number : 09.86

Photography No: DSCN 2854

Provenance: Chandraketugarh

Technique: Hand Modelled

Size: 11.5x5x6 cm

Period: 1<sup>st</sup>-2<sup>nd</sup> centuries CE

This is another toy cart animal figurine of an elephant. The present specimen represents decorations on its body and head besides dresses and ornaments. The tusk is bent towards the right and the teeth are exposed. The eyes and ears are decorated with the help of incision technique.



### **An Elephant**

Accession Number : 09.87

Photography No: DSCN 2854

Provenance: Chandraketugarh

Technique: Hand Modelled

Size: 11.5x12x6 cm

Period: 1<sup>st</sup>-2<sup>nd</sup> centuries CE

This is a broken specimen of an elephant toy cart. The present specimen represents an elephant adorned with garlands and sporting lotus stalks. A similar wheel figure has been reported from Chandraketugarh and is now kept in the State Archaeological Museum, Kolkata.





## **An Elephant**

Accession Number : 09.87

Photography No: DSCN 2940

Provenance: Chandraketugarh

Technique: Hand Modelled

Size: 12x6x6 cm

Period: 1<sup>st</sup>-2<sup>nd</sup> centuries CE

The broken wheeled figurine depicts the forepart of an elephant. The figure has incised decorations of necklace and ear ornaments.. Eyes are depicted through incision technique.



## **An Elephant**

Accession Number : 09.90

Photography No: DSCN 2946

Provenance: Chandraketugarh

Technique: Hand Modelled

Size: 12x7.5x7.5 cm

Period: 1<sup>st</sup>-2<sup>nd</sup> centuries CE

The wheeled figurine depicts the forepart of an elephant. The specimen is abraded.



## **An Elephant**

Accession Number : 06.88

Photography No: DSCN 2854

Provenance: Chandraketugarh

Technique: Hand Modelled

Size: 9x5x3 cm

Period: 1<sup>st</sup>-2<sup>nd</sup> centuries CE

The wheeled figurine depicts the forepart of an elephant. Red slip has been applied on the specimen .





### **An Elephant**

Accession Number : 06.133  
 Photography No: IMG\_0156  
 Provenance: Chandraketugarh  
 Technique: Moulded  
 Size: 5x4.3 cm  
 Period: 1<sup>st</sup>-2<sup>nd</sup> centuries CE

This is a fragmentary and highly abraded piece of an elephant

### **An Elephant**

Accession Number : 09.163  
 Photography No: IMG\_0028  
 Provenance: Chandraketugarh  
 Technique: Hand modelled  
 Size: 8.5x8x4.5 cm  
 Period: 1<sup>st</sup>-2<sup>nd</sup> centuries CE

This is a hand modelled round (three dimensional) figure of an elephant.



### **A Elephant**

Accession Number : 06.133  
 Photography No: IMG\_0042  
 Provenance: Chandraketugarh  
 Technique: Moulded  
 Size: 5x4.3 cm  
 Period: 1<sup>st</sup>-2<sup>nd</sup> centuries CE

This is another figure of a hand modelled round (three dimensional) figure of an elephant.







### **An Elephant**

Accession Number : 06.164

Photography No: IMG\_0093

Provenance: Chandraketugarh

Technique: Moulded

Size: 10x11.5x5 cm

Period: 1<sup>st</sup>-2<sup>nd</sup> centuries CE

This is a three dimensional figure of an elephant.

### **A Terracotta Frog (?).**

Accession Number : 09.171

Photography No: DSCN4335

Provenance: Chandraketugarh

Technique: Hand Modelled

Size: 7.5x7.5x8.5m

Period: 1<sup>st</sup>-2<sup>nd</sup> centuries CE

This is probably a terracotta frog (?).







### **A Ram**

Accession Number :09.95

Photography No: DSCN 2820

Provenance: Chandraketugarh

Technique: Hand Modelled

Size: 14x9x10 cm

Period: 1<sup>st</sup>-2<sup>nd</sup> centuries CE

This is a broken horse toy cart bearing red slip.

### **A Ram**

Accession Number : 08.108

Photography No: DSCN 2824

Provenance: Chandraketugarh

Technique: Hand Modelled

Size: 16x10x9.5 cm

Period: 1<sup>st</sup>-2<sup>nd</sup> centuries CE

The wheeled figurine depicts the forepart of an ornate ram. The figure is decorated with a head band having a central floral motif and a broad collar. The mouth of the ram is slightly open.



### **A Ram**

Accession Number : 08.106

Photography No: DSCN

Provenance: Chandraketugarh

Technique: Hand Modelled

Size: 13x9x4.6 cm

Period: 1<sup>st</sup>-2<sup>nd</sup> centuries CE

This is another toy cart in the shape of a ram. The mouth and left ear are broken. The right ear is decorated with incision technique. The neck portion bears a number of chain like incisions.



### **A Ram**

Accession Number : 06.105

Photography No: DSCN 2914

Provenance: Chandraketugarh

Technique: Hand Modelled

Size: 7x10x6.5 cm

Period: 1<sup>st</sup>-2<sup>nd</sup> centuries CE

This is yet another representation of wheeled figure of a ram. This figure has an appliqué design with stamped decoration and floral central motifs. The mouth and nostril are parted and eyes stamped, while the ears are pointed and the horns appears to curl over the head in an elaborate and ornate manner..

### **A Ram**

Accession Number : 09.96

Photography No: DSCN 2879

Provenance: Chandraketugarh

Technique: Hand Modelled

Size: 13x9.5x10cm

Period: 1<sup>st</sup>-2<sup>nd</sup> centuries CE

A hand made toy cart figure of a ram. The mouth, ears, and horns are rendered by incisions. It has a head band of appliqué circlets. The figure has red slip.



### **A Ram**

Accession Number : 06.101

Photography No: DSCN 2812

Provenance: Chandraketugarh

Technique: Hand Moulded

Size: 13x9.5x10 cm

Period: 1<sup>st</sup>-2<sup>nd</sup> centuries CE

The specimen represents a hand moulded toy cart figurine of a ram. The mouth, ears and horns are rendered by incisions. It has head band of appliqué circlets. It has a hole at the bottom for axle.







### **A Ram**

Accession Number : 06.133

Photography No: IMG\_0151

Provenance: Chandraketugarh

Technique: Hand Modelled

Size: 5x4.3 cm

Period: 1<sup>st</sup>-2<sup>nd</sup> centuries CE

This is a fragmentary and highly abraded piece of an elephant

### **A Ram**

Accession Number : 08.102

Photography No: DSCN 2894

Provenance: Chandraketugarh

Technique: Hand Modelled

Size: 12.5x8.5x7.5 cm

Period: 1<sup>st</sup>-2<sup>nd</sup> centuries CE

This is a broken tor cart piece of a ram.



### **A Ram**

Accession Number : 06.133

Photography No: IMG\_0104

Provenance: Chandraketugarh

Technique: Hand Modelled

Size: 5x4.3 cm

Period: 1<sup>st</sup>-2<sup>nd</sup> centuries CE

This is a fragmentary head of a ram.





### **A Ram**

Accession Number : 06.133

Photography No: IMG\_0145

Provenance: Chandraketugarh

Technique: Hand Modelled

Size: 5x4.3 cm

Period: 1<sup>st</sup>-2<sup>nd</sup> centuries CE

This is a fragmentary and highly abraded piece of a ram.



### **A Ram**

Accession Number : 06.133

Photography No: IMG\_0147

Provenance: Chandraketugarh

Technique: Hand Modelled

Size: 5x4.3 cm

Period: 1<sup>st</sup>-2<sup>nd</sup> centuries CE

This is a fragmentary and highly abraded piece of a ram with stylized decoration.



### **A Ram**

Accession Number : 06.133

Photography No: DSCN 2520

Provenance: Chandraketugarh

Technique: Hand Modelled

Size: 5x4.3 cm

Period: 1<sup>st</sup>-2<sup>nd</sup> centuries CE

This is a broken torso of a ram(?).



## An Owl

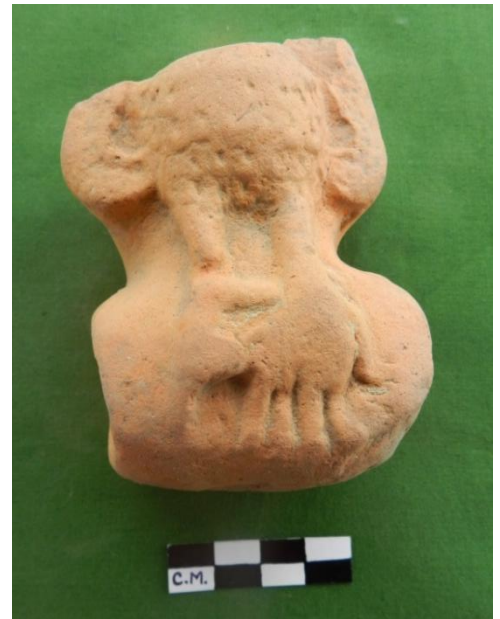
Accession Number : NA  
Photography No: IMG\_0019  
Provenance: Chandraketugarh  
Technique: Moulded  
Size: 12x8.5x6 cm  
Period: 1<sup>st</sup>-2<sup>nd</sup> centuries CE

This is a round figure of an owl

## An Owl Toy cart

Accession Number : 08.168  
Photography No: DSCN4308  
Provenance: Chandraketugarh  
Technique: Hand Modelled  
Size: 9.4x6x4.5cm  
Period: 1<sup>st</sup>-2<sup>nd</sup> centuries CE

The present figure is an owl toy cart having red slip.. The body of the bird is decorated with stamped decorations.



Accession Number : 08.100  
Photography No: DSCN 2854  
Provenance: Chandraketugarh  
Technique: Hand Modelled  
Size: 12x9.5x7.5 cm  
Period: 1<sup>st</sup>-2<sup>nd</sup> centuries CE

This is an unidentified ill-fired wheelless figurine depicting the forepart of an animal.





## A Horse

Accession Number : 06.98

Photography No: DSCN2843

Provenance: Chandraketugarh

Technique: Hand Moulded

Size: 11x12x6 cm

Period: 1<sup>st</sup>-2<sup>nd</sup> centuries CE

This is a broken head of a horse toy cart. It is hand-modelled with stamped eyes and appliquéd head dress.

## A Horse

Accession Number : 06.97

Photography No: DSCN2844

Provenance: Chandraketugarh

Technique: Hand Moulded

Size: 12.5x8x9.5 cm

Period: 1<sup>st</sup>-2<sup>nd</sup> centuries CE

This is another broken head of a horse toy cart. It is a hand-modelled specimen with stamped eyes. There is a head band with stamped decoration.



## A Horse

Accession Number :09.99

Photography No: DSCN2853

Provenance: Chandraketugarh

Technique: Hand Moulded

Size: x cm

Period: 1<sup>st</sup>-2<sup>nd</sup> centuries CE

This is a broken and ill fired head of a horse toy cart. It is a hand-modelled specimen with stamped eyes and appliquéd head dress . The mouth is slightly open.





## A Horse

Accession Number : 08.103

Photography No: DSCN 2875

Provenance: Chandraketugarh

Technique: Hand Modelled

Size: 9.2x6.2x8.5 cm

Period: 1<sup>st</sup>-2<sup>nd</sup> centuries CE

The beautiful wheeled horse figurine depicts the forepart of head. It is hand modelled figure. Deep stamped eyes, nose and mouth and appliquéd head dress with stamped decoration. A uniform red slip has been applied on the surface



## A Horse

Accession Number : 09.121

Photography No: DSCN 4186

Provenance: Chandraketugarh

Technique: Moulded

Size: 5.3x5.8 cm

Period: 1<sup>st</sup>-2<sup>nd</sup> centuries CE

An ill fired terracotta specimen showing a horse in walking mode. The specimen is eroded.



## Horse Rider

Accession Number : 08.125

Photography No: DSCN4285

Provenance: Chandraketugarh

Technique: Moulded

Size: 5.2x5.4cm

Period: 1<sup>st</sup>-2<sup>nd</sup> centuries CE

The beautiful plaque shows a man riding a well decorated horse. The rider is in whipping attitude.



### **A Horse**

Accession Number : 06.94

Photography No: DSCN 2854

Provenance: Chandraketugarh

Technique: Hand Modelled

Size: 13.2x9x8.5 cm

Period: 1<sup>st</sup>-2<sup>nd</sup> centuries CE

The broken wheeled figurine bearing an axle depicts the forepart of a horse. The eyes, nostrils and mouths are rendered with incision technique.

### **A Horse**

Accession Number : 06.104

Photography No: DSCN 2901

Provenance: Chandraketugarh

Technique: Hand Modelled

Size: 11x8.5x8 cm

Period: 1<sup>st</sup>-2<sup>nd</sup> centuries CE

The wheeled figurine depicts the forepart of a beautiful horse. The jaws, ears are decorated with incision marks and the nose is partly broken. There is a ornamented head band and stamped decorations on the face.



### **Double Horse Rider**

Accession Number : 06.88

Photography No: DSCN 2854

Provenance: Chandraketugarh

Technique: Hand Modelled

Size: 9x5x3 cm

Period: 1<sup>st</sup>-2<sup>nd</sup> centuries CE

This is an interesting toy cart depicting a two wheeled figurine of a pair of horse. These horses are decorated with incision techniques. The upper broken part most probably represents a rider (?).



### **Bird**

Accession Number : 09.127

Photography No: DSCN 2452

Provenance: Chandraketugarh

Technique: Moulded

Size: 7x6.5 cm

Period: 1<sup>st</sup>-2<sup>nd</sup> centuries CE

This extant specimen of a plaque is probably a wall decoration as the hole was made for suspension. The bird is seated on a decorated platform. The beak touches the leaf of a tree. A similar specimen depicting the same theme has been found from Chandraketugarh and is now in the collection of the State Archaeological Museum, Kolkata. (Sengupta 185).



### **Stylized Toy Bird**

Accession Number : 08.170

Photography No: DSCN4299

Provenance: Chandraketugarh

Technique: Hand Modelled

Size: 7x9x5cm

Period: 1<sup>st</sup>-2<sup>nd</sup> centuries CE

This is terracotta toy found from Chandraketugarh. This is a bird in the round and is of double mould technique. It probably depicts a dove and was used as a rattle for children.

### **A Decorated Horse**

Accession Number : 06.130

Photography No: DSCN 2481

Provenance: Chandraketugarh

Technique: Moulded

Size: 5.8x6.2 cm

Period: 1<sup>st</sup>-2<sup>nd</sup> centuries CE

A decorated and ornamented horse is seated at the centre of the square shaped terracotta object. The frontal part of another horse is depicted on the right side of the tablet. The border of the tablet is beautifully decorated with floral design.





# Pottery

The archaeological site Chandraketugarh has yielded important pottery types in grey ware, rouletted ware and sherds of BRW decorated on the exterior just below the rim with a row of stamped medallions depicting a bird motif within a square panel. Period IV assignable to the Gupta period yielded carinated and flanged cooking vessels and bowls of red ware, dishes with various rim forms, grey ware, Northern Black Polished Ware, Black and Red Ware , Black Slipped Ware and others.



Accession Number : NA  
Photography No: DSCN4350  
Technique: Wheel made  
Size: R-13xH-6.5 cm  
Colour: Grey  
Section: Thick  
Fabric: Coarse  
Slip : No  
Feature: Four legs with perforation at the centre.

Accession Number : NA  
Photography No: DSCN4367  
Technique: Wheel made  
Size: R-7.93 x H-5 cm  
Colour: Grey  
Section: Thick  
Fabric: Coarse  
Slip : Black  
Feature: Lower part of a stand with striation marks.



Accession Number : NA  
Photography No: DSCN4385  
Technique: Wheel made  
Size: R-9.8 x H-15 cm  
Colour: Red  
Section: Fine  
Fabric: Fine  
Slip : Black  
Feature: Handi without-curved beaded rim.



Accession Number : NA  
Photography No: DSCN4395  
Technique: Wheel made  
Size: D 14 cm  
Colour: Red  
Section: Thick  
Fabric: Coarse  
Slip : No  
Feature: Shallow flat base bowl.

Accession Number : NA  
Photography No: DSCN4440  
Technique: Wheel made  
Size: D-13 cm  
Colour: Red  
Section: Thick  
Fabric: Coarse  
Slip : No  
Feature: Carinated vessel with externally projecting rim.







Accession Number : NA  
 Photography No: DSCN4404  
 Technique: Wheel made  
 Size: D 16.5 cm  
 Colour: Grey  
 Section: medium  
 Fabric: fine  
 Slip : Black  
 Feature: Flat base deep bowl

Accession Number : NA  
 Photography No: DSCN4417  
 Technique: Wheel made  
 Size: D 14 cm  
 Colour: Red  
 Section: Medium  
 Fabric: Medium  
 Slip : Red  
 Feature: Incurved flat base bowl.



Accession Number : NA  
 Photography No: IMG\_0183  
 Technique: Wheel made  
 Size: D 14 cm  
 Colour: Grey  
 Section: Thin  
 Fabric: Fine  
 Slip : Black  
 Feature: Early historic bowl.

Accession Number : NA  
Photography No: DSCN4422  
Technique: Wheel made  
Size: D 14 cm  
Colour: Buff  
Section: Thick  
Fabric: Coarse  
Slip : No  
Feature: Shallow flat base bowl.



Accession Number : NA  
Photography No: DSCN4395  
Technique: Wheel made  
Size: D 14 cm  
Colour: Red  
Section: medium  
Fabric: medium  
Slip : No  
Feature: Shallow flat base bowl with narrow stand

Accession Number : NA  
Photography No: DSCN4395  
Technique: Wheel made  
Size: D 5.8 cm  
Colour: Black  
Section: Thin  
Fabric: Fine  
Slip : Black  
Feature: Knife edge bowl.



Accession Number : NA  
Photography No: IMG\_0006  
Technique: hand made  
Size: D 14 cm  
Colour: Red  
Section: Thick  
Fabric: Coarse  
Slip : No  
Feature: Miniature hand made handi.



Accession Number : NA  
Photography No: IMG\_0010  
Technique: Wheel made  
Size: D 4.45 cm  
Colour: Red  
Section: Thick  
Fabric: Medium  
Slip : No  
Feature: Miniature hand made flat base handi.

Accession Number : NA  
Photography No: IMG\_0014  
Technique: hand made  
Size: D 6 cm  
Colour: Red  
Section: Thick  
Fabric: Coarse  
Slip : No  
Feature: Miniature hand made lid with non-contiguous base.







Accession Number : NA  
 Photography No: IMG\_0017  
 Technique: wheel made  
 Size: D 6.5 cm  
 Colour: Red  
 Section: Thick  
 Fabric: Coarse  
 Slip : No  
 Feature: Miniature hand made and ill-fired perforated pot.

Accession Number : NA  
 Photography No: IMG\_0022  
 Technique: Wheel made  
 Size: D 4 cm  
 Colour: grey  
 Section: Thin  
 Fabric: Fine  
 Slip : No  
 Feature: Miniature pot.



Accession Number : NA  
 Photography No: IMG\_0006  
 Technique: Wheel made  
 Size: D 14 cm  
 Colour: Red  
 Section: Thin  
 Fabric: Fine  
 Slip : No  
 Feature: Miniature ink-pot shape pot.



Accession Number : NA  
 Photography No: IMG\_0046  
 Technique: Wheel made  
 Size: D 14 cm  
 Colour: Red  
 Section: Thick  
 Fabric: Medium  
 Slip : No  
 Feature: Miniature hand made handi.

Accession Number : NA  
 Photography No: IMG\_0047  
 Technique: Wheel made  
 Size: D 14 cm  
 Colour: Red  
 Section: Thick  
 Fabric: Medium  
 Slip : No  
 Feature: Miniature bowl with flat base.



Accession Number : NA  
 Photography No: IMG\_0049  
 Technique: Wheel made  
 Size: D 14 cm  
 Colour: Red  
 Section: Thick  
 Fabric: Medium  
 Slip : No  
 Feature: Miniature pot.

Accession Number : NA  
Photography No: IMG\_0052  
Technique: Wheel made  
Size: D 14 cm  
Colour: Red  
Section: Thick  
Fabric: Medium  
Slip : No  
Feature: Miniature pot with flat base.



Accession Number : NA  
Photography No: IMG\_0054  
Technique: Wheel made  
Size: D 14 cm  
Colour: Red  
Section: Thick  
Fabric: Medium  
Slip : No  
Feature: Miniature pot with flat base.



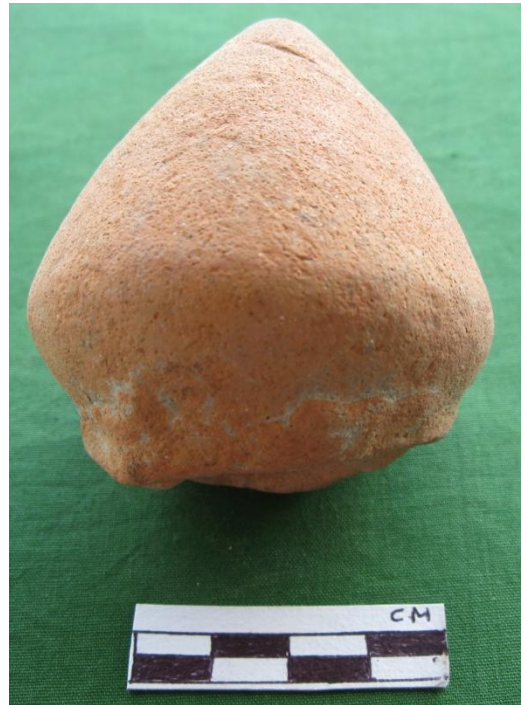
Accession Number : NA  
Photography No: IMG\_0057  
Technique: Wheel made  
Size: D 14 cm  
Colour: Red  
Section: Thick  
Fabric: Medium  
Slip : No  
Feature: Miniature pot with broad flat base.





Accession Number : NA  
 Photography No: IMG\_0059  
 Technique: Wheel made  
 Size: D 14 cm  
 Colour: Grey  
 Section: Thin  
 Fabric: Medium  
 Slip : No  
 Feature: Miniature pot with flat base.

Accession Number : NA  
 Photography No: IMG\_0063  
 Technique: Wheel made  
 Size: D 14 cm  
 Colour: Red  
 Section: Thick  
 Fabric: Coarse  
 Slip : No  
 Feature: cone shaped miniature pot.



Accession Number : NA  
 Photography No: IMG\_0068  
 Technique: Wheel made  
 Size: D 14 cm  
 Colour: Red  
 Section: Thin  
 Fabric: Medium  
 Slip : No  
 Feature: Miniature trumpler wit out-curved rim.





Accession Number : NA  
 Photography No: IMG\_0070  
 Technique: Wheel made  
 Size: D 14 cm  
 Colour: Grey  
 Section: Thin  
 Fabric: Medium  
 Slip : No  
 Feature: Miniature bowl.

Accession Number : NA  
 Photography No: IMG\_0074  
 Technique: Wheel made  
 Size: D 14 cm  
 Colour: Buff  
 Section: Thick  
 Fabric: Medium  
 Slip : No  
 Feature: Miniature pot with flat base.



Accession Number : NA  
 Photography No: IMG\_0079  
 Technique: Wheel made  
 Size: D 14 cm  
 Colour: Buff  
 Section: Thin  
 Fabric: Medium  
 Slip : No  
 Feature: Miniature trumpler with out-curved rim and flat base.



Accession Number : NA  
 Photography No: IMG\_0080  
 Technique: Wheel made  
 Size: D 14 cm  
 Colour: Red  
 Section: Thick  
 Fabric: Medium  
 Slip : No  
 Feature: Miniature pot with flat base.

Accession Number : NA  
 Photography No: IMG\_0083  
 Technique: Wheel made  
 Size: D 14 cm  
 Colour: Red  
 Section: Thin  
 Fabric: Medium  
 Slip : No  
 Feature: Miniature pot with out-curved rim.



Accession Number : NA  
 Photography No: IMG\_0088  
 Technique: Wheel made  
 Size: D 14 cm  
 Colour: Red  
 Section: Thin  
 Fabric: Medium  
 Slip : No  
 Feature: Miniature pot.







Accession Number : NA  
 Photography No: IMG\_0103  
 Technique: Wheel made  
 Size: D 14 cm  
 Colour: Grey  
 Section: Thin  
 Fabric: Fine  
 Slip : Black  
 Feature: Early historic miniature pot with long neck.

Accession Number : NA  
 Photography No: IMG\_0107  
 Technique: Wheel made  
 Size: D 14 cm  
 Colour: Grey  
 Section: Thin  
 Fabric: Fine  
 Slip : Black  
 Feature: Early historic miniature pot with long neck.



Accession Number : NA  
 Photography No: IMG\_0112  
 Technique: Wheel made  
 Size: D 14 cm  
 Colour: Grey  
 Section: Thin  
 Fabric: Fine  
 Slip : Black  
 Feature: Early historic miniature pot with long neck.

Accession Number : NA  
Photography No: IMG\_0115  
Technique: Wheel made  
Size: D 14 cm  
Colour: Grey  
Section: Thin  
Fabric: Fine  
Slip : Black  
Feature: Early historic miniature pot with long neck.



Accession Number : NA  
Photography No: IMG\_0118  
Technique: Wheel made  
Size: D 14 cm  
Colour: Grey  
Section: Thin  
Fabric: Fine  
Slip : Black  
Feature: Early historic miniature pot with long neck.

Accession Number : NA  
Photography No: IMG\_0121  
Technique: Wheel made  
Size: D 14 cm  
Colour: Grey  
Section: Thin  
Fabric: Fine  
Slip : Black  
Feature: Early historic miniature pot with narrow neck.





Accession Number : NA  
 Photography No: IMG\_0161  
 Technique: Wheel made  
 Size: D 14 cm  
 Colour: Grey  
 Section: Thin  
 Fabric: Fine  
 Slip : Black  
 Feature: miniature pot with narrow neck.

Accession Number : NA  
 Photography No: IMG\_0163  
 Technique: Wheel made  
 Size: D 14 cm  
 Colour: Grey  
 Section: Thin  
 Fabric: Fine  
 Slip : NA  
 Feature: Trumpler .



Accession Number : NA  
 Photography No: IMG\_0166  
 Technique: Wheel made  
 Size: D 14 cm  
 Colour: Grey  
 Section: Thin  
 Fabric: Fine  
 Slip : NA  
 Feature: Miniature pot with broader mouth.





Accession Number : NA  
Photography No: IMG\_0168  
Technique: Wheel made  
Size: D 14 cm  
Colour: Grey  
Section: Thin  
Fabric: Fine  
Slip : NA  
Feature: jar with out-curved rim..



Accession Number : NA  
Photography No: IMG\_0171  
Technique: Wheel made  
Size: D 14 cm  
Colour: Grey  
Section: Thin  
Fabric: Fine  
Slip : Black  
Feature: Jar with narrow neck.

Accession Number : NA  
Photography No: IMG\_0174  
Technique: Wheel made  
Size: D 14 cm  
Colour: Grey  
Section: Thin  
Fabric: Fine  
Slip : NA  
Feature: Elongated storage jar.





Accession Number : NA  
Photography No: IMG\_0176  
Technique: Wheel made  
Size: D 14 cm  
Colour: Grey  
Section: Thin  
Fabric: Fine  
Slip : Black  
Feature: Jar.

Accession Number : NA  
Photography No: IMG\_0180  
Technique: Wheel made  
Size: D 14 cm  
Colour: Grey  
Section: Thin  
Fabric: Fine  
Slip : NA  
Feature: flat base stand.



Accession Number : NA  
Photography No: IMG\_0178  
Technique: Wheel made  
Size: D 14 cm  
Colour: Grey  
Section: Thin  
Fabric: Fine  
Slip : Black  
Feature: Miniature pot.



Accession Number : NA  
Photography No: IMG\_0181  
Technique: Wheel made  
Size: D 14 cm  
Colour: Grey  
Section: Thin  
Fabric: Fine  
Slip : NA  
Feature: Miniature pot .



Accession Number : NA  
Photography No: IMG\_0186  
Size: D 14 cm  
Colour: Grey  
Section: Thin  
Fabric: Fine  
Slip : Black  
Feature: Early historic miniature pot with narrow neck.



# Miscellaneous

Accession Number : NA

Photography No: IMG\_0012

Size: 9.9 x 1.1 cm

This is a crescent shape knife of copper.



Iron Nail

Accession Number : NA

Photography No: IMG\_0010

Size: 7.5 cm

This is a iron nail with broad and flat head.

Accession Number : NA

Photography No: IMG\_0014

Size: 14.8 x 2.6

This is a iron knife with sharp cutting edge



Accession Number : NA

Photography No: IMG\_0018

Size: 10 x 02.5 cm

This is a iron arrow head with cutting edges on iron knife with sharp cutting edge



Knitting needle

Accession Number : NA

Photography No: IMG\_0062

Size: 9 cm

This is a bone needle.







Knitting needle

Accession Number : NA

Photography No: IMG\_0064

Size: 9 cm

This is a bone needle.

Knitting needle

Accession Number : NA

Photography No: IMG\_0078

Size: 9 cm

This is a bone needle.



Antimony rod

Accession Number : NA

Photography No: IMG\_0080

Size: 9 cm

Antimony rod of round section thickened at the ends.

Antimony rod

Accession Number : NA

Photography No: IMG\_0081

Size: 9 cm

A broken antimony rod of round section thickened at the end.



Game object

Accession Number : NA

Photography No: IMG\_0006

Size: 4.9 x 0.7 cm

This is an elongated ivory game object.

Flesh rubber

Accession Number : NA

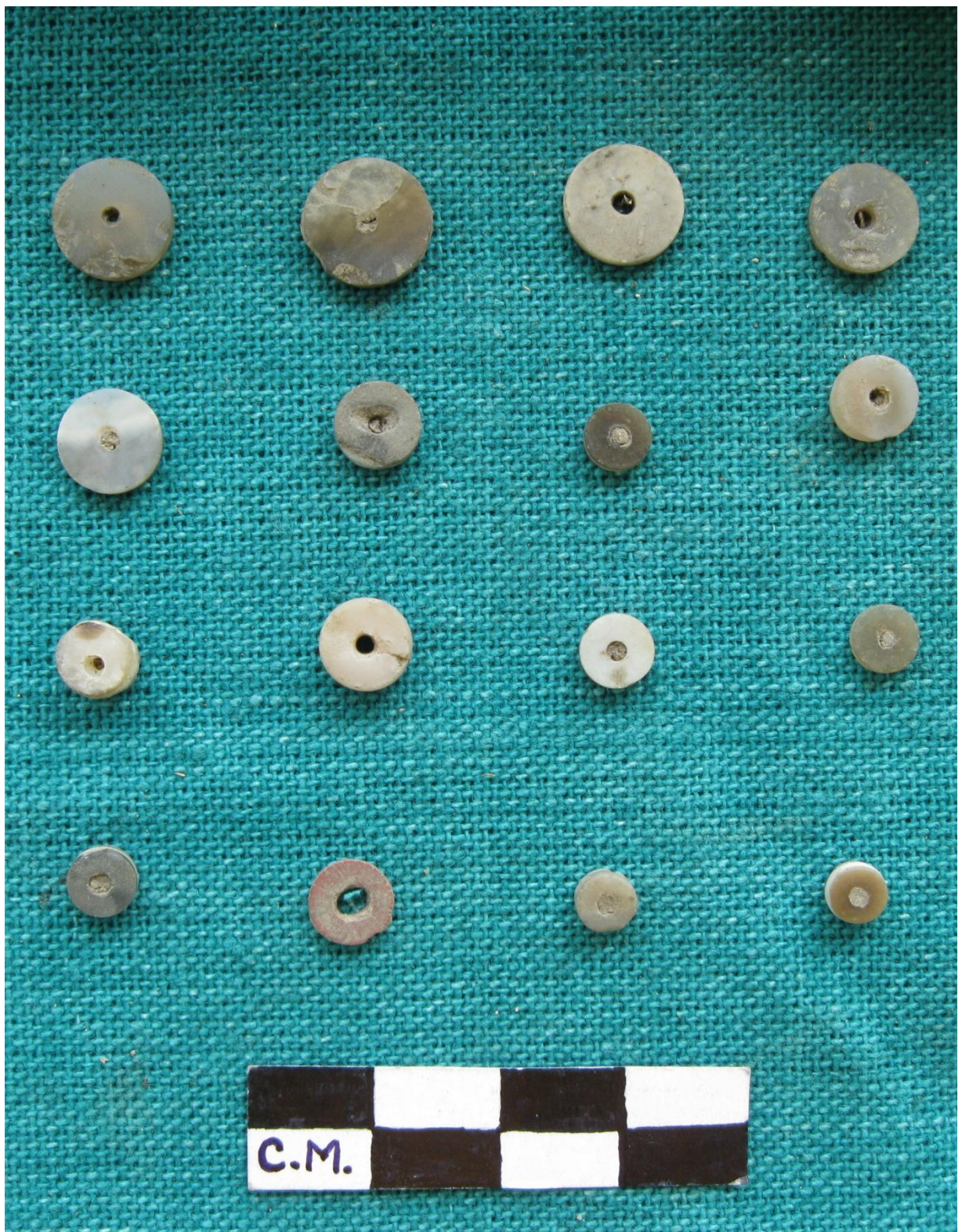
Photography No: IMG\_0058

Size: 4.9 x 0.7 cm

This is a rectangular shaped flesh rubber with rough surface on all sides.







These are the tabular and circular agate bead with different sizes





## Stone Bead

1. Carnelian Bead short bicornate triangular faceted
2. Glass bead ; irregular
- 3 Carnelian Bead: long convex circular
4. Banded carnelian: long cylindrical circular
5. Carnelian Bead: Spherical
6. Irregular
- 7 . Standard circular tabular
8. Agate Etched
9. Agate Spherical
10. Carnelian square shaped bead
11. Standard circular tabular
12. Banded agate long cylindrical circular
13. Irregular
14. Irregular
15. Spherical
16. Irregular



Wheel

Accession Number : NA

Photography No: IMG\_0089

Size: 14 x 8 cm

Spoked wheel

Wheel

Accession Number : NA

Photography No: IMG\_0092

Size: 8.8 x 3.2cm

Plano-convex wheel with star shaped design impressed on one side.



Wheel

Accession Number : NA

Photography No: IMG\_0094

Size: 8.8 x 3.1cm

Same as above







Wheel

Accession Number : NA

Photography No: IMG\_0096

Size: 9.5 x 3 cm

Double convex wheel



Wheel

Accession Number : NA

Photography No: IMG\_0098

Size: 6 x 2.2 cm

Double convex wheel



Wheel

Accession Number : NA

Photography No: IMG\_0103

Size: 9 x 4.5 cm

Double convex plain wheel



Wheel

Accession Number : NA

Photography No: IMG\_0105

Size: 7 x 5.5 cm

Double convex plain wheel



Wheel

Accession Number : NA

Photography No: IMG\_0108

Size: 9.5 x 4.8 cm

Double convex plain wheel

Wheel

Accession Number : NA

Photography No: IMG\_0109

Size: 7.5 x 5.8 cm

Double convex plain wheel





Reel

Accession Number : NA

Photography No: IMG\_0029/30

Size: 4.3x 0.9 cm

Double spoked on one side another side has concentric rings

Reel

Accession Number : NA

Photography No: IMG\_0029/30

Size: 3.8 x 0.8 cm

One side has geometric designs and other has concentric rings



Reel

Accession Number : NA

Photography No: IMG\_0039/40

Size: 3.7 x 1.1 cm

Same as above



Reel

Accession Number : NA

Photography No: IMG\_0048/49

Size: 1.6 x 1 cm

Plain terracotta reel





Reel

Accession Number : NA

Photography No: IMG\_00242/44

Size: 3.2 x 1.1 cm

Front side has concentric design and other side is plain.

Bone Disc

Accession Number : NA

Photography No: IMG\_00256

Size: R 4 T 1.1 cm

This is unique disc made of animal bone.



Bone Disc

Accession Number : NA

Photography No: IMG\_00256

Size: R 5.8 x T 1.1 cm

This is another unique disc made of animal bone.

Terracotta Disc

Accession Number : NA

Photography No: IMG\_0067

Size: R 4.5 x T 0.6 cm

This is another terracotta disc.



Terracotta Disc

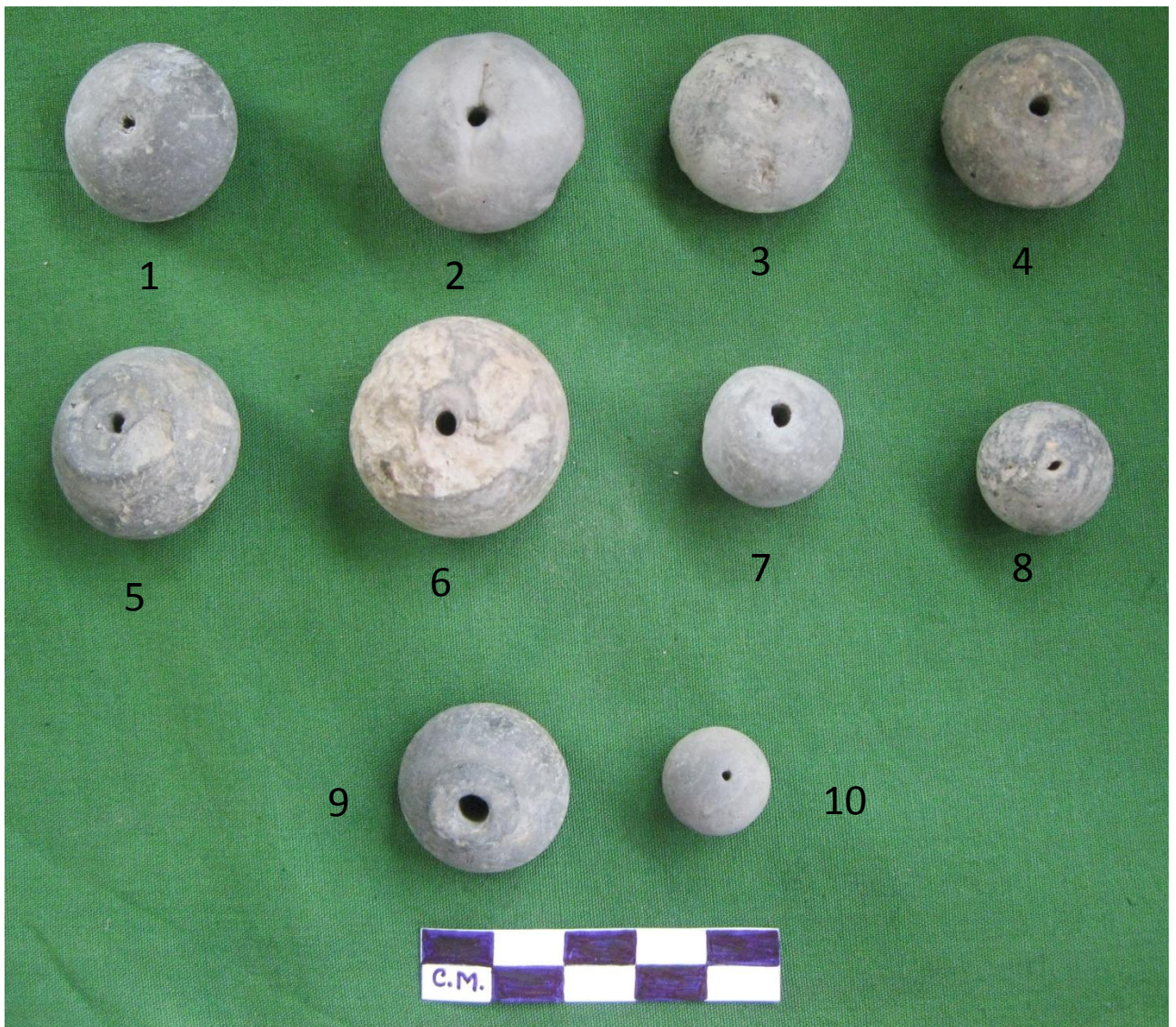
Accession Number : NA

Photography No: IMG\_0067

Size: R 5 x T 1.0 cm

This is another unique disc made of animal bone.





# Terracotta Bead

1. Short blunt edge
2. Standard bicornate
3. Short blunt edge
4. Short blunt edge
5. Vase shaped
6. Standard bicornate
7. Short blunt edge
8. Standard spherical
9. Vase shaped
10. Standard spherical



These are unique specimens recovered from Chandraketugarh. Some of them have a flat circular base with rounded edges and a slightly concave upper surface decorated with a groove and a cordon. The specimens have hollow stem with splayed out rim. These were used for mirror or lamp-stand.

Accession Number : NA

Photography No:IMG\_0124

Technique: Wheel made

Colour: Grey

Section: Thick

Fabric: Fine

Slip : Northern Black Polished



Accession Number : NA

Photography No: MG\_0126

Technique: Wheel made

Colour: Grey

Section: Thick

Fabric: Fine

Slip :Black Slipped

Accession Number : NA

Photography No: MG\_0128

Technique: Wheel made

Colour: Grey

Section: Thick

Fabric: Medium

Slip : No

Feature: Four legs with perforation at the centre.



Accession Number : NA  
Photography No: IMG\_0132  
Technique: Wheel made  
Colour: Red  
Section: Thick  
Fabric: Coarse  
Slip : No



Accession Number : NA  
Photography No: IMG\_0131  
Technique: Wheel made  
Colour: Red  
Section: Thick  
Fabric: Medium  
Slip : No

Accession Number : NA  
Photography No: IMG\_0136  
Technique: Wheel made  
Colour: Grey  
Section: Thick  
Fabric: Fine  
Slip : No





Accession Number : NA  
 Photography No: IMG\_0138  
 Technique: Wheel made  
 Colour: Grey  
 Section: Thick  
 Fabric: Coarse  
 Slip : No

Accession Number : NA  
 Photography No: IMG\_0140  
 Technique: Wheel made  
 Colour: Grey  
 Section: Thick  
 Fabric: Medium  
 Slip : No



Accession Number : NA  
 Photography No: IMG\_0142  
 Technique: Wheel made  
 Colour: Grey  
 Section: Thick  
 Fabric: Medium  
 Slip : No



Accession Number : NA  
Photography No: IMG\_0145  
Technique: Wheel made  
Colour: Grey  
Section: Thick  
Fabric: Medium  
Slip : No



Accession Number : NA  
Photography No: IMG\_0148  
Technique: Wheel made  
Colour: Grey  
Section: Thick  
Fabric: Medium  
Slip : No

Accession Number : NA  
Photography No: IMG\_0146  
Technique: Wheel made  
Colour: Grey  
Section: Thick  
Fabric: Medium  
Slip : No



Accession Number : NA  
Photography No: IMG\_0150  
Technique: Wheel made  
Colour: Grey  
Section: Thick  
Fabric: Medium  
Slip : No



Accession Number : NA  
Photography No: IMG\_0154  
Technique: Wheel made  
Colour: Grey  
Section: Thick  
Fabric: Medium  
Slip : No

Accession Number : NA  
Photography No: IMG\_0156  
Technique: Wheel made  
Colour: Grey  
Section: Thick  
Fabric: Medium  
Slip : No



Accession Number : NA  
Photography No: IMG\_0163  
Technique: Wheel made  
Colour: Grey  
Section: Thick  
Fabric: Medium  
Slip : No



Accession Number : NA  
Photography No: IMG\_0158  
Technique: Wheel made  
Colour: Grey  
Section: Thick  
Fabric: Medium  
Slip : No



Accession Number : NA  
Photography No: IMG\_0160  
Technique: Wheel made  
Colour: Grey  
Section: Thick  
Fabric: Medium  
Slip : No







Accession Number : NA  
 Photography No: DSCN4350  
 Technique: Wheel made  
 Colour: Grey  
 Section: Thick  
 Fabric: Medium  
 Slip : No

Accession Number : NA  
 Photography No: DSCN4350  
 Technique: Wheel made  
 Colour: Grey  
 Section: Thick  
 Fabric: Medium  
 Slip : No



Accession Number : NA  
 Photography No: DSCN4350  
 Technique: Wheel made  
 Colour: Grey  
 Section: Thick  
 Fabric: Medium  
 Slip : No



Accession Number : NA  
 Photography No: DSCN4350  
 Technique: Wheel made  
 Colour: Grey  
 Section: Thick  
 Fabric: Medium  
 Slip : No

Accession Number : NA  
 Photography No: DSCN4350  
 Technique: Wheel made  
 Colour: Grey  
 Section: Thick  
 Fabric: Medium  
 Slip : No



Accession Number : NA  
 Photography No: DSCN4350  
 Technique: Wheel made  
 Colour: Grey  
 Section: Thick  
 Fabric :Medium  
 Slip : No